

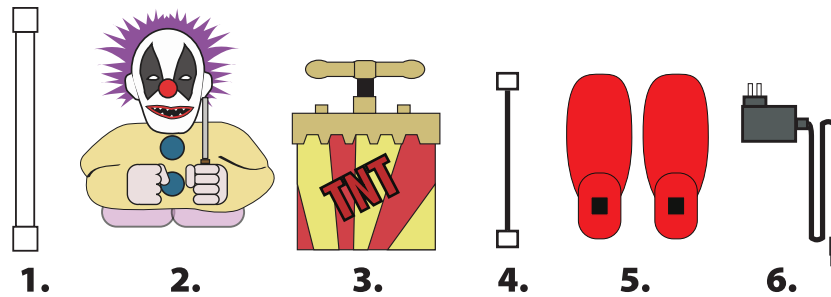
# THRASHING CLOWN AND TNT BOX

## INSTALLATION AND OPERATING INSTRUCTIONS

KEEP ALL PLASTIC AND WIRE PARTS AWAY FROM CHILDREN

### PARTS INCLUDED

1. POLE
2. HEAD & HANDS WITH CLOTHES & BASE
3. TNT BOX
4. MIT CABLE
5. SHOES
6. 6V 2A ADAPTER



**Make sure to seat Thrashing Clown on a level chair when setting up!**  
**If the BASE is not level, Thrashing Clown will NOT function correctly.**

- 1). Open the zipper located under the back of Thrashing Clown's shirt and insert **POLE** into back of **HEAD & HANDS WITH CLOTHES & BASE**. Snap lock the **POLE** into the base of the neck. (Match **B** to **B**) Press until it clicks into place.

- 2). Insert **POLE** into **BASE**. (Match **A** to **A**) Press until it clicks into place.

- 3). Wrap **HOOK AND LOOP** straps under chair (chair not included), pull very taut, and fasten to each other.

**Important:** Thrashing Clown will function best with the **BASE** level, or tilted slightly forward. If the **BASE** is tilted backward, Thrashing Clown will not function optimally.

- 4). Wrap **HOOK AND LOOP** straps located under wrists around arms of chair, and fasten to each other.

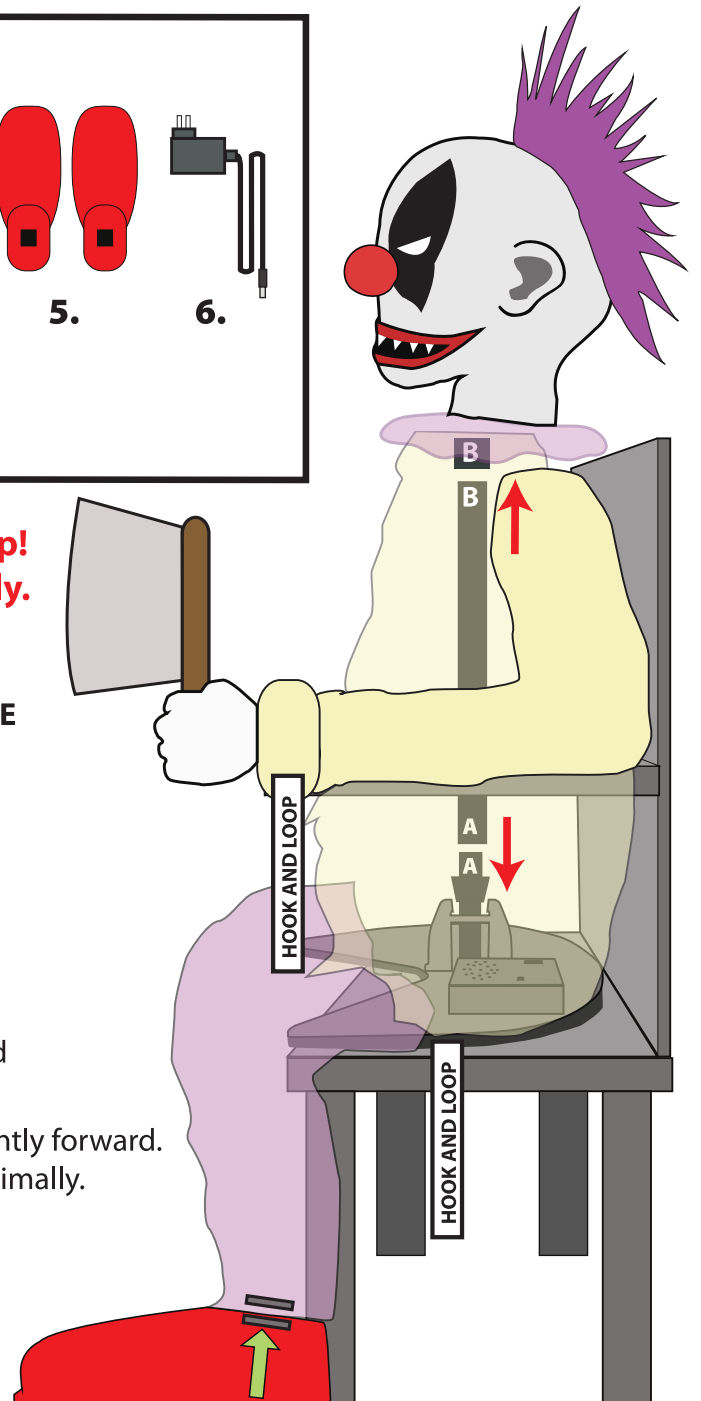
- 5). Place the shoes on Thrashing Clown attaching the hook and loop fasteners on the top of the shoes to the hook and loop fasteners located on the bottom of the pants.

- 6). Insert 4 AA batteries into the battery compartment located on **BASE**, or attach 6V 2A DC adapter to the jack located on top of the **BASE**.  
See **BASE DIAGRAM** for battery and adapter jack location.

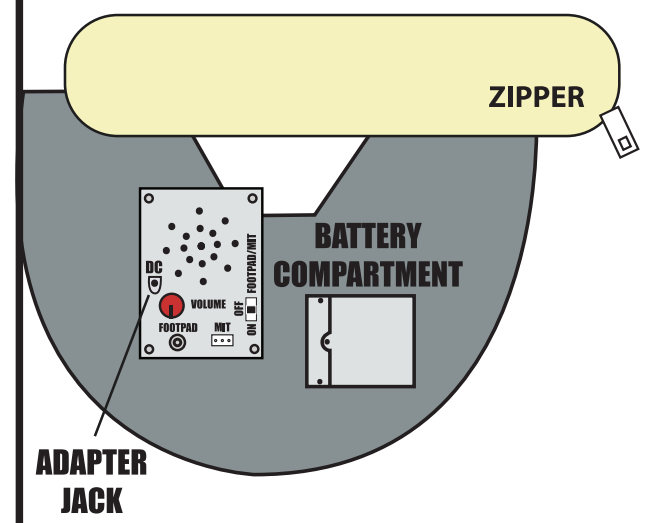
**Note:** Turn switch to the ON position to operate in Sound or Motion activation mode. Make a loud sound (clap), or move in front of the item to activate. Turn item OFF when not in use.

- 7). Close zipper located on the back of Thrashing Clown's pants.

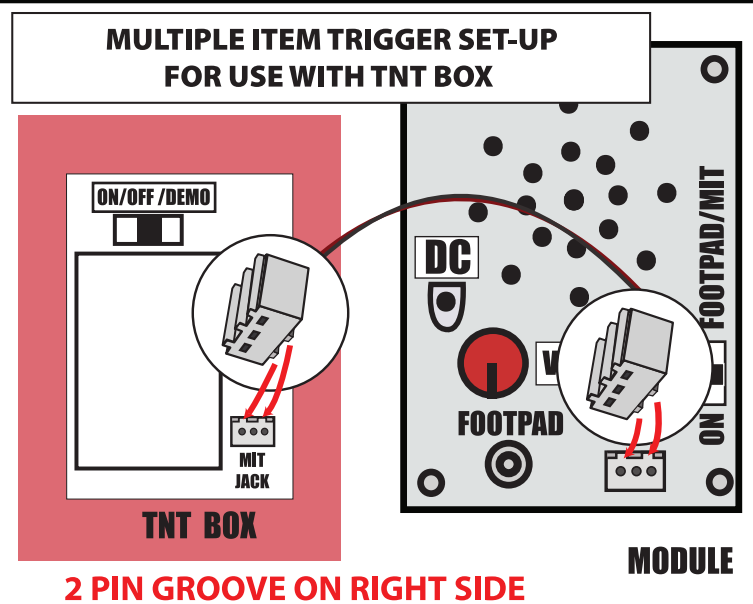
**Note:** Leave zipper open when continuing with MIT or FOOTPAD set up procedure.



### BASE DIAGRAM



- 1). Place **TNT BOX** in desired location.
- 2). Locate **MIT CABLE** and insert cable into MIT jack located on Thrashing Clown's **MODULE** and MIT jack located on **TNT BOX**.
- 3). Switch Thrashing Clown to Footpad / MIT mode to trigger Thrashing Clown using **TNT BOX**. Turn item OFF when not in use.
- 4). Close zipper located on the back of Thrashing Clown's pants.
- 5). Turn switch on **TNT BOX** to ON position.
- 6). Push down on **TNT BOX** plunger to activate **TNT BOX** and automatically activate Thrashing Clown.

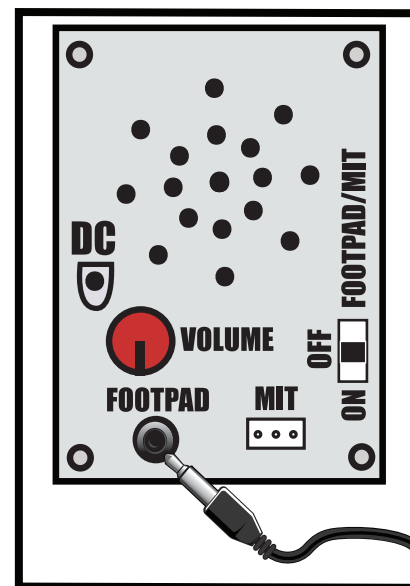


## Optional Footpad Setup

*Follow steps #1 through 6 on initial installation first.*

1. Connect the cable from the optional footpad to the jack labeled FOOTPAD located on the base.
2. Place the switch on the base into the 'FOOTPAD' position to enable FOOTPAD activation.
3. Step on FOOTPAD to activate the scary sequence. (go to instruction #7 to continue setup)

\*Footpads are sold separately and can be purchased at [www.spirithalloween.com](http://www.spirithalloween.com)



VISIT US AT [TEKKYTOYS.COM](http://TEKKYTOYS.COM)

Surface Washable Only.  
ALL NEW MATERIALS : PLASTIC, POLYESTER,  
POLYESTER FIBER

Battery Powered:  
Requires 4 AA Alkaline Batteries (not included)  
DC Adapter Ready 6V 2A (included)  
\*\* Footpad and DC adapter sold separately and can  
be purchased at: [www.spirithalloween.com](http://www.spirithalloween.com)

Thrashing Clown and TNT Box are a  
trademark of Tekky Toys.  
Copyright © 2013 Tekky Toys.  
All Rights Reserved.  
**MADE IN CHINA**



**\*\*No weight should be placed onto item\*\***

**Warning! This item is not a toy. For decoration only. Small parts, choking hazard.**  
This product is intended for use by persons 15 years of age and older.  
Not intended for use by children ages 14 years and younger.

**WARNING**  
**DO NOT TURN THIS ITEM ON UNTIL YOU HAVE COMPLETELY FINISHED ASSEMBLY.**

**Stay clear of item while operating.**

## SMART PHONE SCAN SETUP VIDEO

