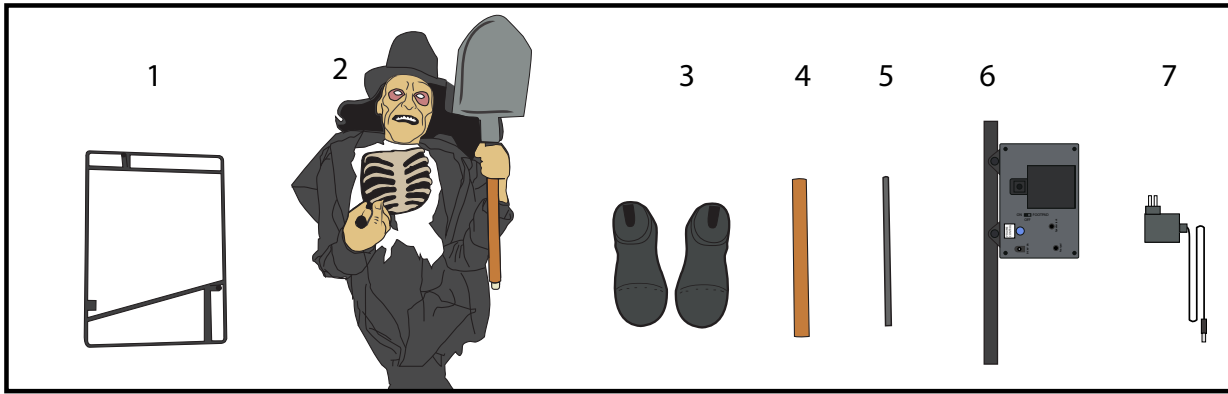


# BONE COLLECTOR™

## Installation and Operating Instructions

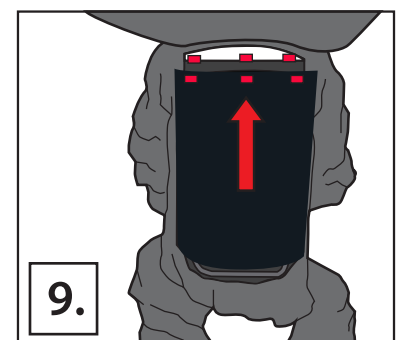
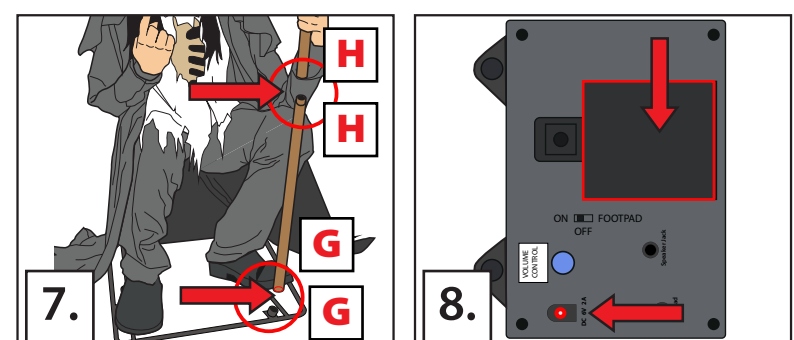
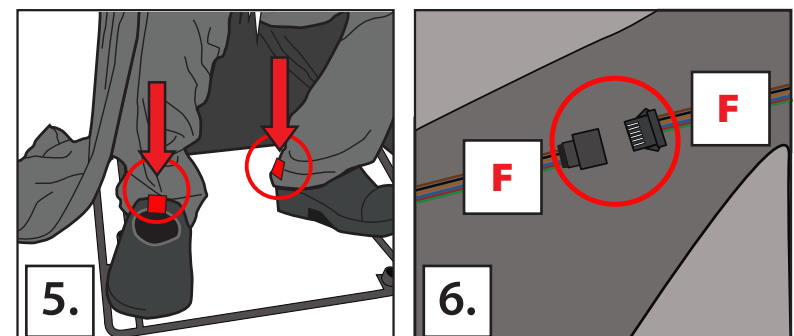
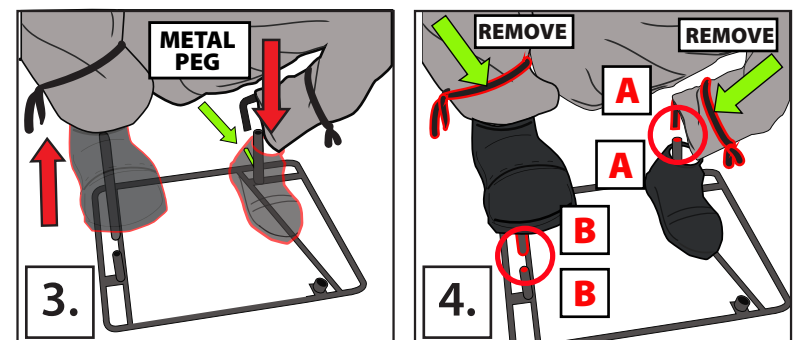
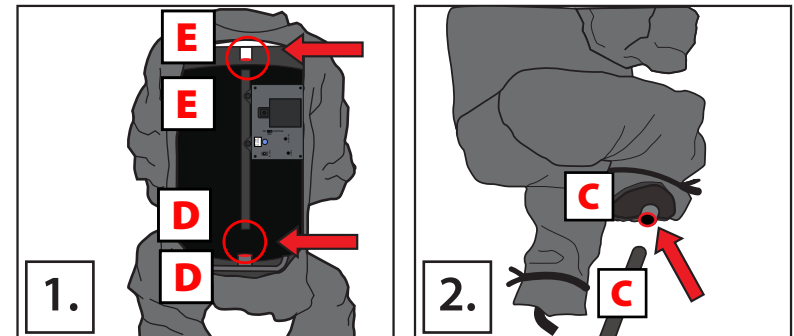
Keep all plastic and wire parts away from children.



### PARTS

1. METAL STAND
2. BODY HEAD AND SHOVEL
3. SHOES
4. SHOVEL POLE
5. LEG POLE
6. CENTER POLE AND CONTROL BOX
7. 6V2A ADAPTER

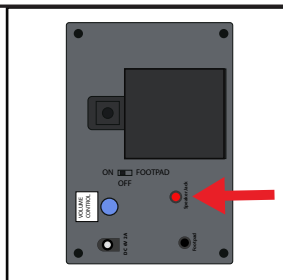
1. Insert the CENTER POLE AND CONTROL BOX into the back of the BODY HEAD AND SHOVEL. Snap lock the top of the CENTER POLE below the shoulders (Match E to E) and snap lock the bottom of the CENTER POLE into the lower frame. (Match D to D)
2. Insert the LEG POLE into the right leg on the BODY, HEAD AND SHOVEL. Snap lock in place. (Match C to C)
3. Slide a SHOE over the post on the METAL STAND. The shoe will rest on the METAL PEG on a slight angle. Slide the other SHOE over the LEG POLE.
4. Lower the BODY, HEAD AND SHOVEL onto the METAL STAND. (Match A to A) and (Match B to B) Untie the fabric wrapped around the bottom of pants legs.
5. Attach the hook and loop fasteners inside the back of the pants to the hook and loop fasteners on the backs of both shoes.
6. Lift the coat on the back of the BODY HEAD AND SHOVEL and connect the wire harness. (Match F to F)
7. Insert the SHOVEL POLE into the METAL STAND and into the bottom of the SHOVEL. (Match G to G) and (Match H to H)
8. Insert 4AA batteries (not included) or connect the 6V 2A ADAPTER (included) into the CONTROL BOX. Turn the switch to the ON position to operate in Sound and Motion activation mode. Move in front of the item or make a loud sound (clap) to activate the item. Turn item OFF when not in use.
9. Attach the black fabric with the hook and loop fasteners located on the back of the BODY HEAD AND SHOVEL. Lower the cape and position the item as seen in the photo below.



### OPTIONAL EXTERNAL SPEAKER SET UP

EXTERNAL SPEAKER IS NOT INCLUDED. MUST BE PURCHASED SEPARATELY.

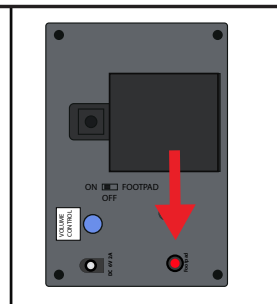
1. Plug speaker cord into the jack labeled SPEAKER JACK located on side of the control box.
2. Use volume knob on external speaker to control volume levels.



### OPTIONAL FOOTPAD SET UP

FOOTPAD IS NOT INCLUDED. MUST BE PURCHASED SEPARATELY.

1. Insert the cable from optional footpad into the jack labeled FOOTPAD on the control box.
2. Place the switch in the FOOTPAD position to enable FOOTPAD activation.
3. Step on the FOOTPAD to activate the scary sequence!



\* Footpads and adapters are sold separately and can be purchased at [www.tekkyaccessories.com](http://www.tekkyaccessories.com)



visit us at [tekkydesign.com](http://tekkydesign.com)  
Requires 6V 2A ADAPTER (included)  
or 4AA batteries (not included)

ALL NEW MATERIALS:  
METAL, FOAM, PLASTIC,  
POLYESTER  
Surface washable only.

BONE COLLECTOR™ is a  
trademark of Tekky.  
Copyright © 2020 Tekky.  
All Rights Reserved.  
MADE IN CHINA

### SMART PHONE SCAN SETUP VIDEO



**BATTERY INSTRUCTIONS AND CAUTIONS**  
Battery installation and removal should be performed by an adult.  
Remove batteries when not in use.  
Use only batteries recommended in the instructions.  
Do not mix new and used batteries.  
Do not mix alkaline, carbon-zinc, nickel-cadmium, rechargeable or different types of batteries.  
Be mindful to insert batteries with the correct polarity (+/-) as indicated.  
Remove all exhausted batteries.  
Rechargeable batteries are only to be charged under adult supervision.  
Rechargeable batteries are to be removed from the item before being charged.  
Non-rechargeable batteries are not to be recharged.  
The supply terminals are not to be short-circuited.  
Always dispose of exhausted batteries properly.  
Do NOT dispose of batteries in fire, they may leak or explode.

**Warning!** This item is not a toy. For decoration only. Small parts, choking hazard.  
This product is intended for use by persons 15 years of age and older.  
Not intended for use by children ages 14 years and younger.

**WARNING**  
**DO NOT TURN ITEM ON UNTIL YOU HAVE COMPLETELY FINISHED ASSEMBLY.**  
**STAY CLEAR OF ITEM WHILE OPERATING.**  
**DO NOT PLACE ITEM ON UNEVEN GROUND.**  
**DO NOT PLACE WEIGHT ON ITEM WHILE IN OPERATION.**



**DO NOT RETURN THIS ITEM TO THE STORE!**  
If experiencing technical difficulties, please go  
to [www.tekkydesign.com](http://www.tekkydesign.com) for assistance.