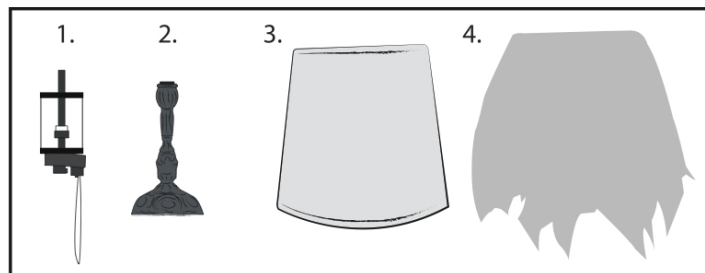


CRAWLING SPIDER LAMP™

INSTALLATION AND OPERATING INSTRUCTIONS

KEEP ALL PLASTIC AND WIRE PARTS AWAY FROM CHILDREN

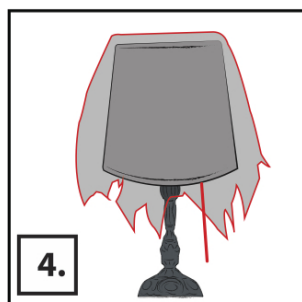
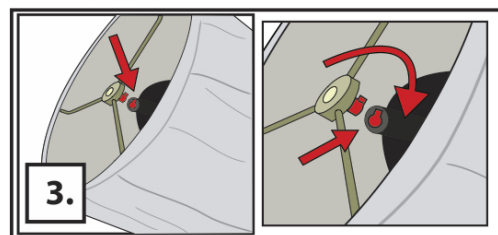
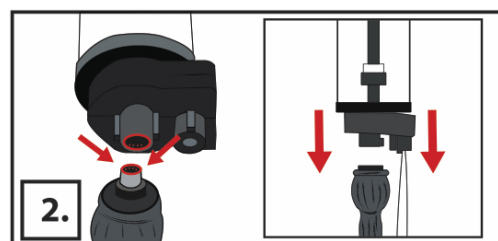
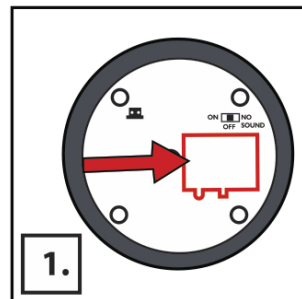
WARNING: DO NOT TURN ON THE PROP UNTIL FULLY ASSEMBLED: STAY CLEAR OF THE PROP WHILE OPERATING



PARTS

1. MODULE
2. LAMP BASE
3. LAMP SHADE
4. LAMP SHADE COVER

1. Insert 3 AA batteries (not included) into the battery compartment located on the bottom of the **LAMP BASE**.
2. Line up the **MODULE** with the top of the **LAMP BASE**. Line up the connecting pins in the **LAMP BASE** with the holes in the **MODULE**. Lower the **MODULE** onto the **LAMP BASE** until seated firmly.
3. Remove the plastic protector from the **LAMP SHADE** and line up the **LAMP SHADE** post with the top of the **MODULE**. Insert the **LAMP SHADE** and gently twist clock-wise to secure.
4. Place the **LAMP SHADE COVER** over the **LAMP SHADE** as pictured below.

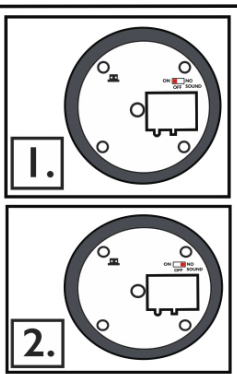


ITEM OPERATION

1. Move switch to **ON** position. Pull the string to activate sound, movement, and lights for full function continuous play. Pull string again to stop.

IMPORTANT: PULL STRING GENTLY SO YOU DO NOT TIP THE LAMP OVER.

2. Move switch to **NO SOUND**. Pull string to activate movement and lights for (NO SOUND) continuous play. Pull string again to stop.



visit us at tekkydesign.com
Requires 3AA batteries (not included)

ALL NEW MATERIALS:
PLASTIC, POLYESTER FABRIC
Surface washable only.
CRAWLING SPIDER LAMP™ is a trademark of Tekky.
Copyright © 2018 Tekky.
All Rights Reserved.
MADE IN CHINA

BATTERY INSTRUCTIONS AND CAUTIONS

Battery installation and removal should be performed by an adult. Remove batteries when not in use. Use only batteries recommended in the instructions. Do not mix new and used batteries. Do not mix alkaline, carbon-zinc, nickel-cadmium, rechargeable or different types of batteries. Be mindful to insert batteries with the correct polarity (+/-) as indicated. Remove all exhausted batteries. Rechargeable batteries are only to be charged under adult supervision. Rechargeable batteries are to be removed from the item before being charged. Non-rechargeable batteries are not to be recharged. The supply terminals are not to be short-circuited. Always dispose of exhausted batteries properly. Do NOT dispose of batteries in fire, they may leak or explode.

Warning! This item is not a toy. For decoration only. Small parts, choking hazard. This product is intended for use by persons 15 years of age and older. Not intended for use by children ages 14 years and younger.

WARNING

DO NOT TURN ITEM ON UNTIL YOU HAVE COMPLETELY FINISHED ASSEMBLY. STAY CLEAR OF ITEM WHILE OPERATING. DO NOT PLACE ITEM ON UNEVEN GROUND. DO NOT PLACE WEIGHT ON ITEM WHILE IN OPERATION

SMART PHONE SCAN SETUP VIDEO



DO NOT RETURN THIS ITEM TO THE STORE!
If experiencing technical difficulties, please go to www.tekkydesign.com for assistance.