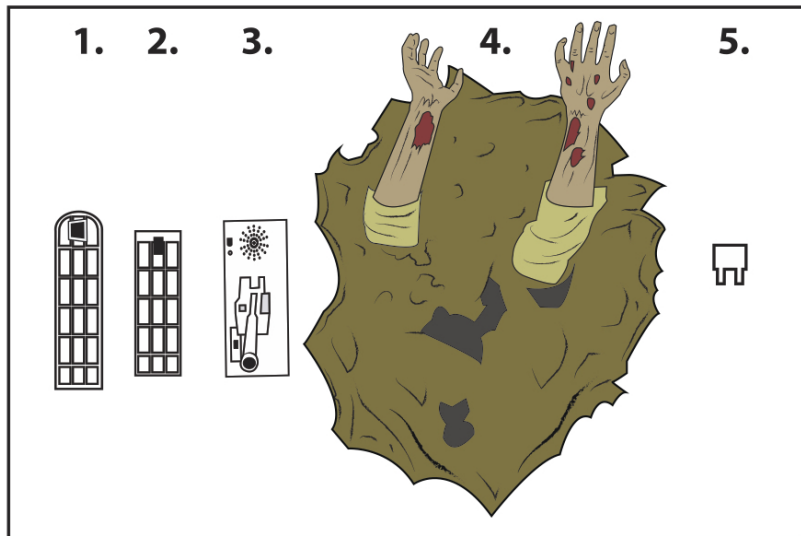


GRAVE GRABBER™

Installation and Operating Instructions

Keep all plastic and wire parts away from children.



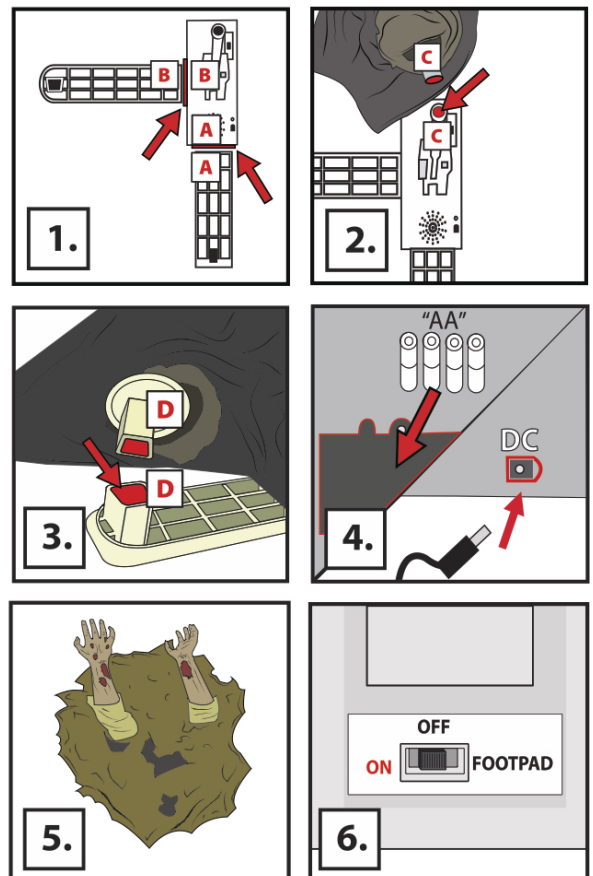
PARTS

1. SIDE FOOT
2. FRONT FOOT
3. MODULE
4. ARMS AND FABRIC
5. FOOT REMOVAL KEY

1. Insert **SIDE FOOT** and **FRONT FOOT** into the bottom of **MODULE**. Snap to lock. Match A to A and Match B to B.

IMPORTANT: Press to make sure each **FOOT** is flush with **MODULE**.
To remove **FOOT**, insert plastic **PLASTIC FOOT REMOVAL KEY** (included) into holes on bottom to release locks, twist and pull.

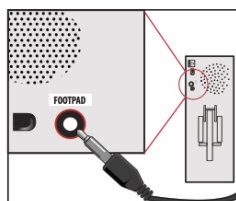
2. Locate the pole underneath the **ARMS AND FABRIC** and insert the pole into the **MODULE**. Match C to C.
3. Locate the pole underneath the **ARMS AND FABRIC**. Insert the pole into the **SIDE FOOT**. Match D to D.
4. Connect 6V2A ADAPTER (not included) or insert 4 AA alkaline batteries into the battery compartment located on the **MODULE**.
5. Spread the fabric around the arms out evenly in all directions.
6. Reach underneath the **ARMS AND FABRIC** and turn switch on top of **MODULE** to ON to operate in Sound activation mode. Make a loud sound (clap) to activate. Leave switch in OFF position when not in use.



OPTIONAL FOOTPAD SET UP

FOOTPAD IS NOT INCLUDED. MUST BE PURCHASED SEPARATELY.

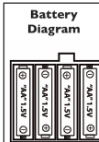
1. Insert the cable from the optional footpad into the jack labeled footpad on the module. Place the switch in the FOOTPAD position to enable.
2. FOOTPAD activation
3. Step on the FOOTPAD to activate the scary sequence!



* Footpads, adapters and all other accessories are sold separately and can be purchased at www.tekkyaccessories.com

BATTERY INSTRUCTIONS AND CAUTIONS

Battery installation and removal should be performed by an adult. Remove batteries when not in use. Use only batteries recommended in the instructions. Do not mix new and used batteries. Do not mix alkaline, carbon-zinc, nickel-cadmium, rechargeable or different types of batteries. Be mindful to insert batteries with the correct polarity (+/-) as indicated. Remove all exhausted batteries. Rechargeable batteries are only to be charged under adult supervision. Rechargeable batteries are to be removed from the item before being charged. Non-rechargeable batteries are not to be recharged. The supply terminals are not to be short-circuited. Always dispose of exhausted batteries properly. Do NOT dispose of batteries in fire, they may leak or explode.



Warning! This item is not a toy. For decoration only. Small parts, choking hazard. This product is intended for use by persons 15 years of age and older. Not intended for use by children ages 14 years and younger.

WARNING

DO NOT TURN ITEM ON UNTIL YOU HAVE COMPLETELY FINISHED ASSEMBLY.
STAY CLEAR OF ITEM WHILE OPERATING.
DO NOT PLACE ITEM ON UNEVEN GROUND.
DO NOT PLACE WEIGHT ON ITEM WHILE IN OPERATION



visit us at tekkydesign.com
Requires 6V 2A ADAPTER
or 4 AA batteries (not included)

ALL NEW MATERIALS:
METAL, FOAM, PLASTIC, POLYESTER
Surface washable only.

GRAVE GRABBER™ is a trademark of Tekky.
Copyright © 2018 Tekky.
MADE IN CHINA



DO NOT RETURN THIS ITEM TO THE STORE!
If experiencing technical difficulties, please go to www.tekkydesign.com for assistance.