

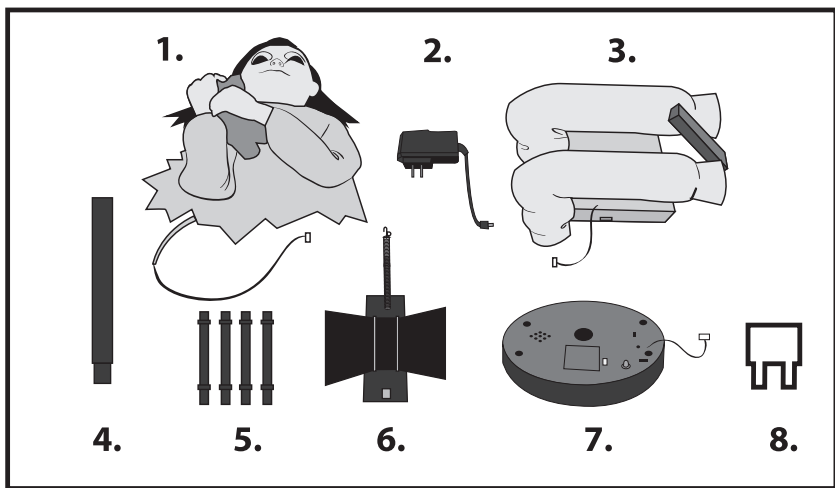
LUNGING LILY

INSTALLATION AND OPERATING INSTRUCTIONS

KEEP ALL PLASTIC AND WIRE PARTS AWAY FROM CHILDREN

PARTS

1. BODY
2. ADAPTER
3. MODULE AND LEGS
4. UPPER POLE
5. SHORT POLES (4)
6. BACK FOOT WITH WEIGHT AND SPRING
7. BASE
8. FOOT REMOVAL KEY



1. Attach **BACK FOOT WITH WEIGHT** to **BASE**. (MATCH A to A)

* **IMPORTANT:** Press to make sure **BACK FOOT** is flush with **BASE**. To remove **BACK FOOT**, insert **FOOT REMOVAL KEY** into holes on bottom to release locks, twist and pull. To avoid damage do not pick item up while **BACK FOOT** is attached.

2. Attach **SHORT POLES** to **BASE**.

3. Attach **MODULE AND LEGS** to **SHORT POLES**. * Both **FRONT LABELS** should be facing the same direction.

4. Attach **BODY** to **UPPER POLE**. (MATCH C to C)

* Line up red marks and push the circular locking pin in while inserting **UPPER POLE** into the **BODY**. Release circular locking pin when head is firmly seated on pole.

IMPORTANT: HEAD WITH CLOTHES MUST BE PROPERLY SECURED TO POLE WITH MODULE TO OPERATE.

5. Line up red marks and push the circular locking pin while attaching the **BODY** and **UPPER POLE** to the **MODULE**. Release the locking pin when the **BODY** is firmly seated on the arm of the **MODULE**. (MATCH B to B)

6. Attach the **SPRING** that is attached to the **BACK FOOT WITH WEIGHT** to the back of the **MODULE AND LEGS**.

7. Connect wire into **BASE**. (MATCH D to D)

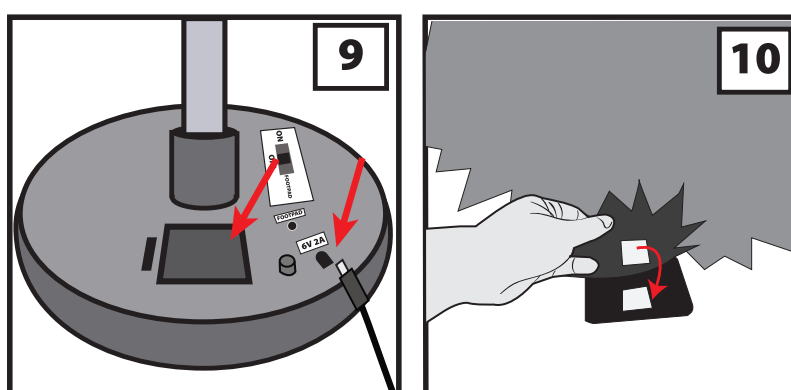
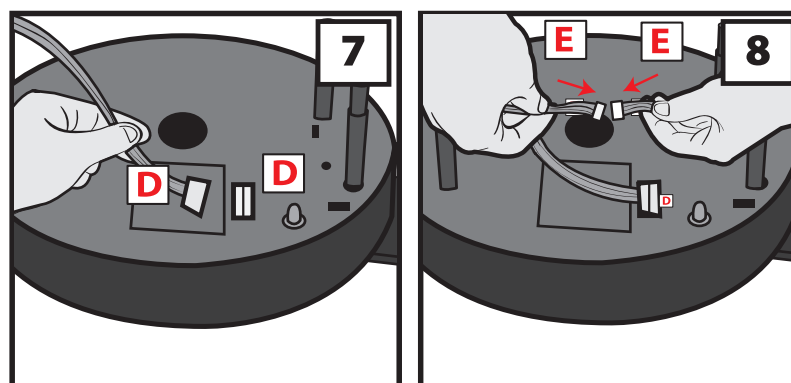
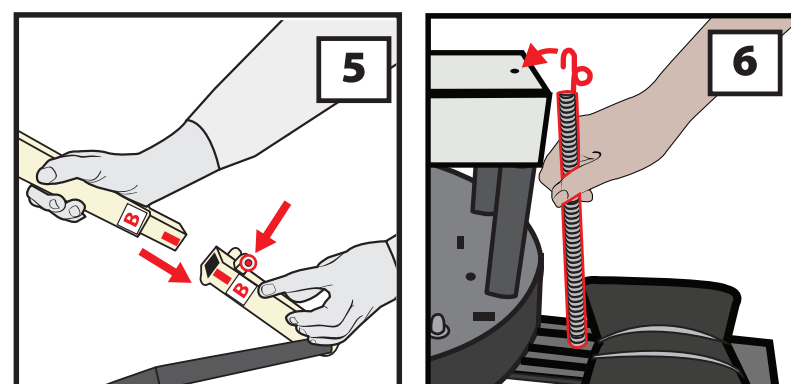
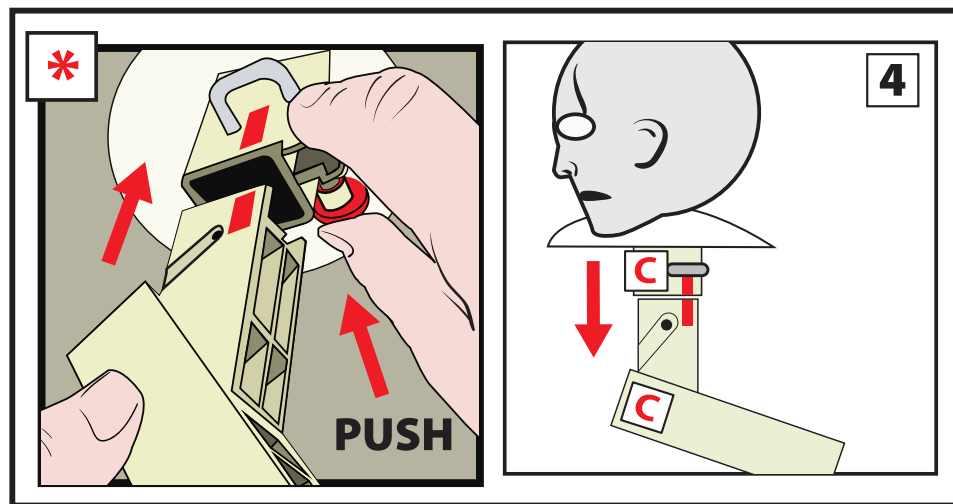
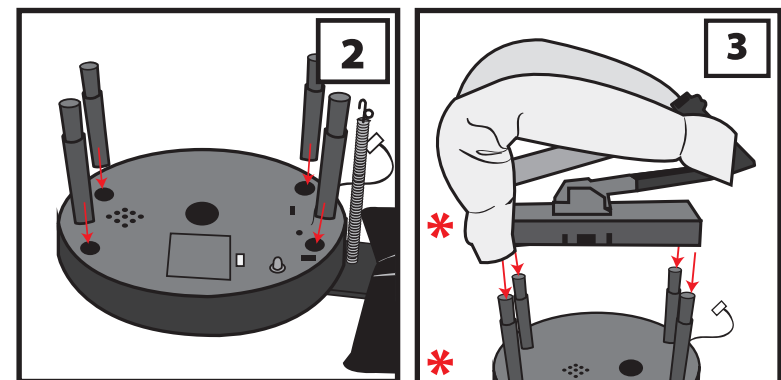
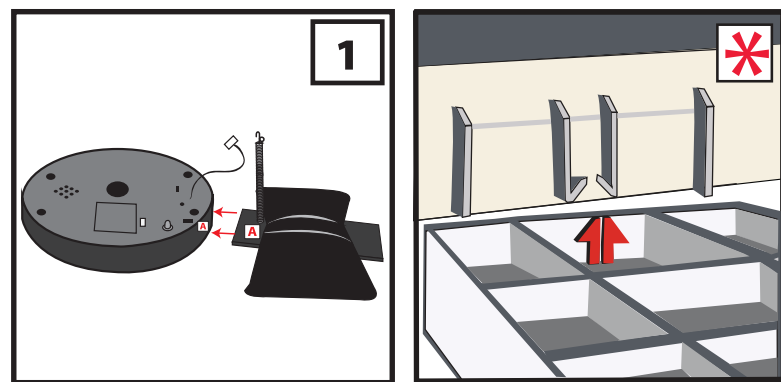
8. Connect both wires labeled E. (MATCH E to E)

9. Connect **ADAPTER**, or insert 4 AA alkaline batteries (not included) into the battery compartment located on the **BASE**.

Note: Turn the switch to the **ON** position to operate in Sound or Motion activation mode. Make a loud sound (clap), or move in front of the item to activate. Turn item **OFF** when not in use.

10. Attach hook and loop on the back of the dress to the **BACK FOOT WITH WEIGHT**.

11. Adjust **VOLUME CONTROL** knob located on the **BASE** as needed.

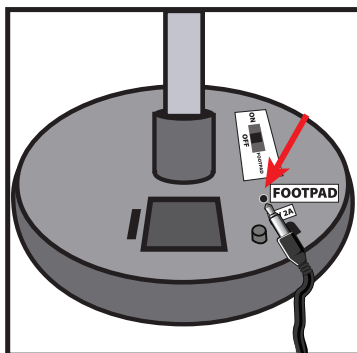


Optional Footpad Setup

Follow steps #1 through #9 on initial installation first.

1. Connect the cable from the optional footpad to the jack labeled FOOTPAD located on the module.
2. Place the switch on the base into the 'FOOTPAD' position to enable FOOTPAD activation.
3. Step on FOOT AD to activate the scary sequence. (go to instruction # 10 to continue setup)

*Footpads are sold separately and can be purchased at www.spirithalloween.com



Warning! This item is not a toy. For decoration only. Small parts, choking hazard. This product is intended for use by persons 15 years of age and older. Not intended for use by children ages 14 years and younger.

WARNING
DO NOT TURN ITEM ON UNTIL YOU HAVE COMPLETELY FINISHED ASSEMBLY.
STAY CLEAR OF ITEM WHILE OPERATING.
DO NOT PLACE ITEM ON UNEVEN GROUND.
DO NOT PLACE WEIGHT ON ITEM WHILE IN OPERATION



DO NOT RETURN THIS ITEM TO THE STORE!
If experiencing technical difficulties, please go to www.tekkytoys.com for assistance.

Tekky Toys Hours of Operation: Monday - Friday 9am to 5pm CST
T: 708-478-8424 E: support@tekkytoys.com
visit us: tekkytoys.com



VISIT US AT TEKKYTOYS.COM

Requires 4 'AA' Batteries
or optional DC adapter (6V 2A)
Surface washable only.
ALL NEW MATERIALS:
PLASTIC, POLYESTER,
POLYESTER FIBER

LUNGING LILY
is a trademark of Tekky Toys.
Copyright © 2014 Tekky Toys.
All Rights Reserved.
Made in China
PATENT 8,602,836

SMART PHONE SCAN SETUP VIDEO

