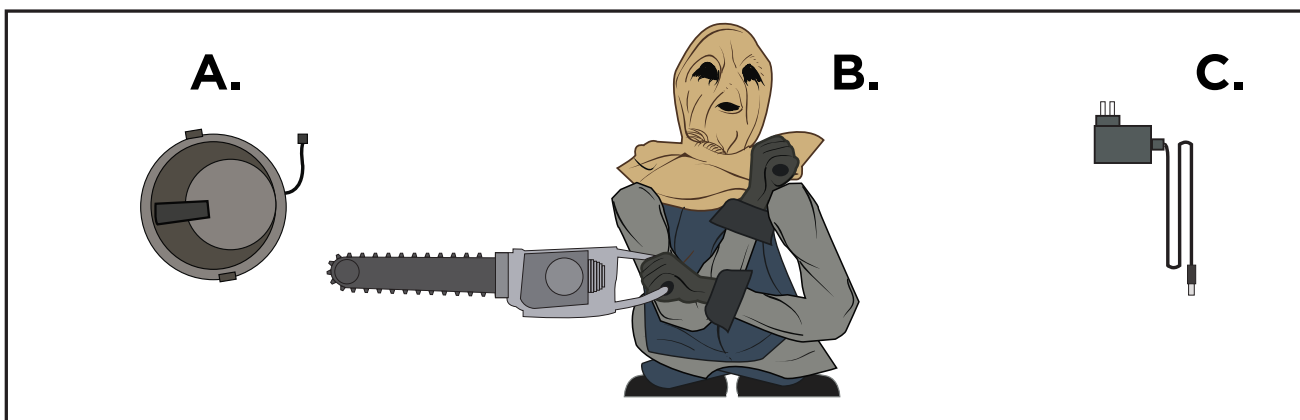


SPIRIT RUSTY

INSTALLATION AND OPERATING INSTRUCTIONS

KEEP ALL PLASTIC AND WIRE PARTS AWAY FROM CHILDREN

WARNING: DO NOT TURN ON THE PROP UNTIL FULLY ASSEMBLED. STAY CLEAR OF THE PROP WHILE OPERATING.



Parts:

A: BOWL

B: HEAD WITH CLOTHES, BASE, AND CHAINSAW

C: 6V2A ADAPTER

Assembly:

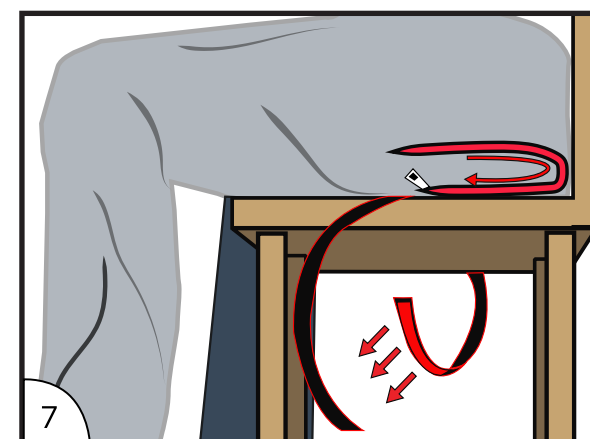
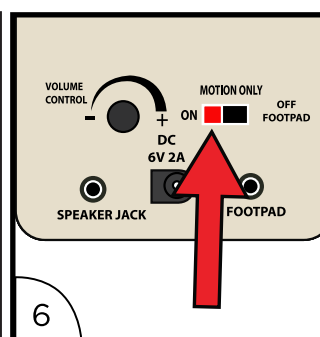
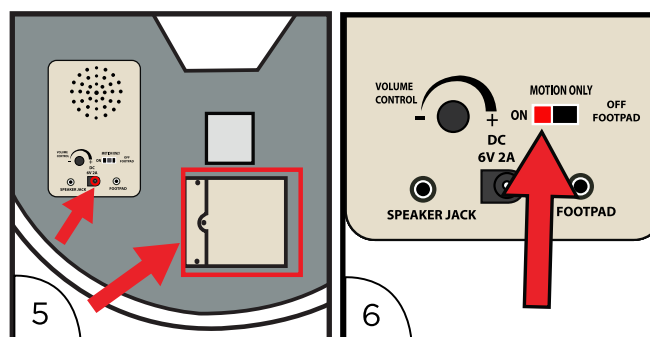
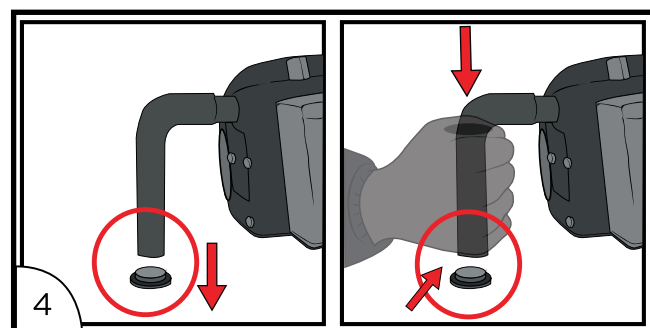
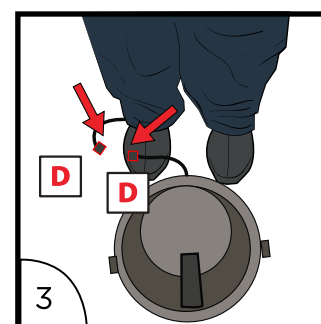
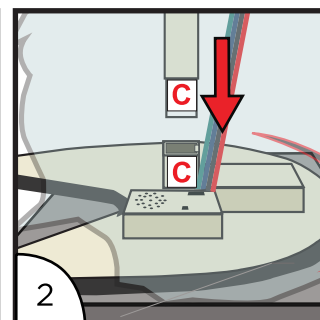
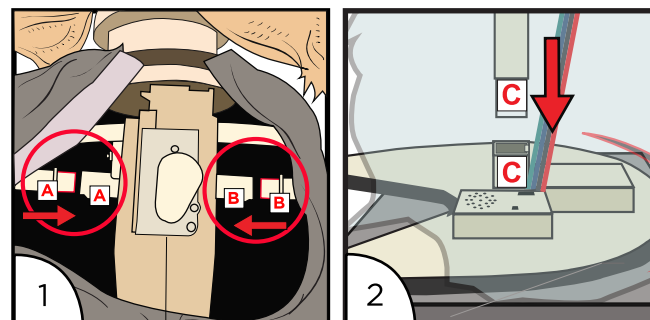
1. Open the hook and loop on the back of Rusty's shirt. Locate the arm snap-lock poles and insert both poles into the module located beneath Rusty's head. (Match A to A and match B to B)
2. Unzip the back of Rusty's pants. Locate the BASE and insert the center snap-lock pole into the BASE. (Match C to C)
3. Place the BOWL at Rusty's feet and connect the wire running from his pants to the wire on the BOWL. (Match D to D)

***Note: BOWL must be level and have a light source above the bowl to enhance the motion sensor function.**

4. Remove the circular cap from the bottom of the chainsaw handle. Insert the handle into Rusty's fist and replace the circular cap into the handle to secure the chainsaw.

IMPORTANT: THE CIRCULAR CAP MUST BE FIRMLY SEATED TO KEEP THE HAND SECURED FOR THE ITEM TO OPERATE PROPERLY.

5. Connect 6V2A ADAPTER (included) or insert 4 AA alkaline batteries (not included) into the battery compartment located on the BASE.
6. Turn the switch to the ON position to operate in Sound and Motion activation mode. Any sound or motion inside the candy bowl will activate the item. For MOTION ONLY, only motion inside the candy bowl will activate the item. Turn item OFF when not in use. Adjust volume control knob as needed.
7. Close zipper on the back of the Rusty's pants. Position Rusty in a chair (not included), fasten hook and loop strap and fill BOWL to lure Trick Or Treaters for a scary surprise!

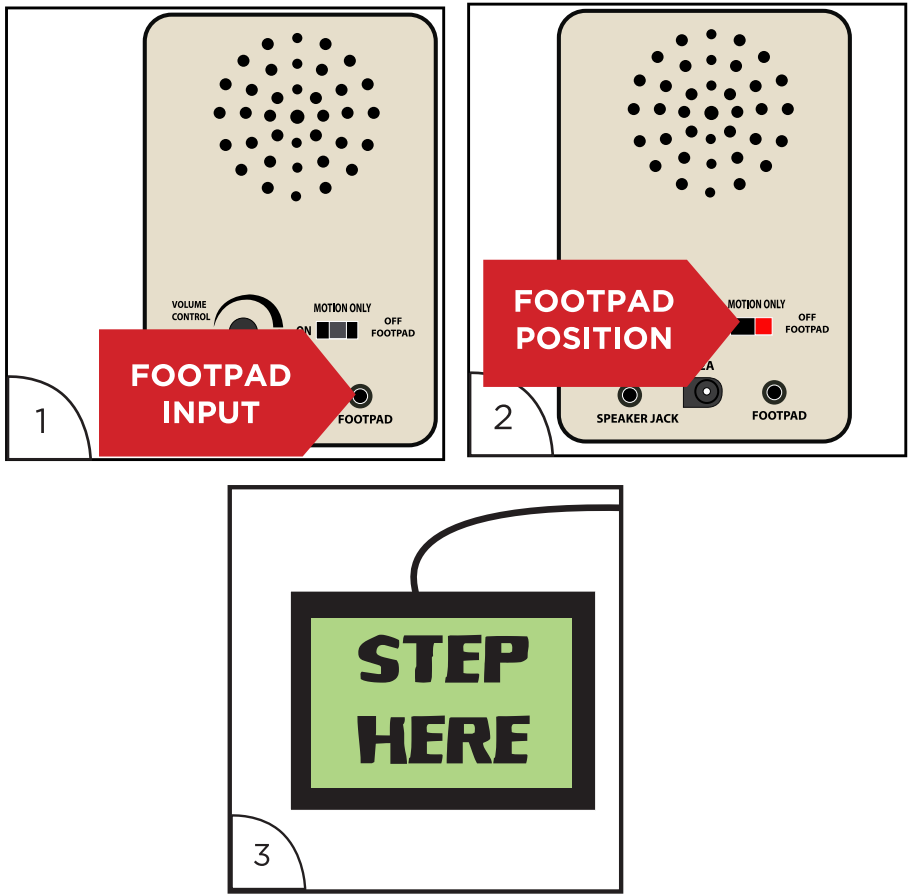


Optional Footpad Setup

Follow steps # 1 through 6 on initial installation first.

- 1. Connect the cable from the optional footpad to the jack labeled FOOTPAD located on the BASE.
- 2. Place the switch on the BASE into the ‘FOOTPAD’ position to enable FOOTPAD activation.
- 3. Step on FOOTPAD to activate the prop.

Footpads (SKU #01181288) are sold separately and can be purchased at www.spirithalloween.com

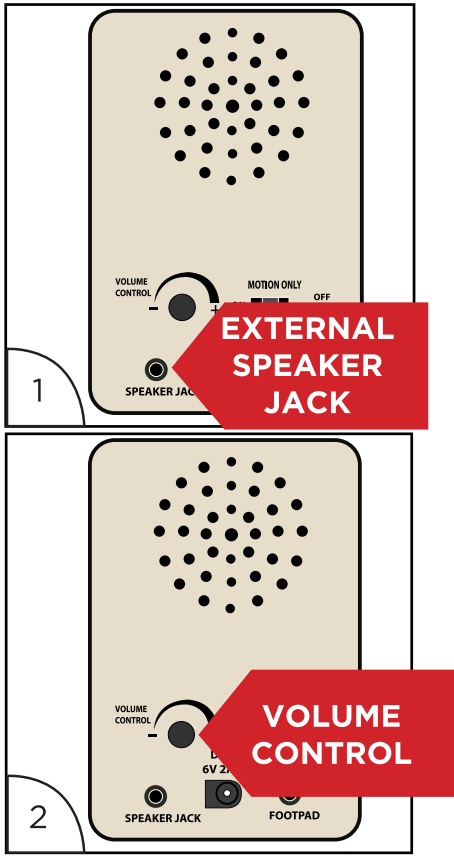


Optional External Speaker Setup Instructions

This prop can be played through an external speaker (sold separately). To use this feature, follow steps # 1 through 6 of assembly instructions and continue to External Speaker Setup.

- 1. Plug speaker cord into the jack labeled SPEAKER JACK located on top of the base.
- 2. Use volume knob on external speaker to control volume levels.

Note: Use external speakers with an impedance of 8 ohms only.



Outdoor Warning

For best overall performance, we recommend you operate your item in a sheltered outdoor area. We also recommend you bring your item indoors during adverse weather conditions (extreme cold, strong winds and/or rain). This item operates best outdoors in temperatures above freezing (32°F).

BATTERY INSTRUCTIONS AND CAUTIONS

- Battery installation and removal should be performed by an adult.
- Remove batteries when not in use.
- Use only batteries recommended in the instructions.
- Do not mix new and used batteries.
- Do not mix alkaline, carbon-zinc, nickel-cadmium, rechargeable or different types of batteries.
- Be mindful to insert batteries with the correct polarity (+/-) as indicated.
- Remove all exhausted batteries.
- Rechargeable batteries are only to be charged under adult supervision.
- Rechargeable batteries are to be removed from the item before being charged.
- Non-rechargeable batteries are not to be recharged.
- The supply terminals are not to be short-circuited.
- Always dispose of exhausted batteries properly.
- Do NOT dispose of batteries in fire, they may leak or explode.

Warning! This item is not a toy. For decoration only. Small parts, choking hazard. This product is intended for use by persons 15 years of age and older. Not intended for use by children ages 14 and under.

WARNING

DO NOT TURN ITEM ON UNTIL YOU HAVE COMPLETELY FINISHED ASSEMBLY. STAY CLEAR OF ITEM WHILE OPERATING. DO NOT PLACE ITEM ON UNEVEN GROUND. DO NOT PLACE WEIGHT ON ITEM WHILE IN OPERATION. **FOR INDOOR OR SHELTERED OUTDOOR USE ONLY**



SPIRITHALLOWEEN.COM

Distributed by
Spirit Halloween
6826 Black Horse Pike
Egg Harbor Township, NJ
08234-4197
MADE IN CHINA



DO NOT RETURN THIS ITEM TO THE STORE!

If experiencing technical difficulties, please email: DrZombie@spirithalloween.com, or call 1-866-586-0155 or go to SpiritHalloween.com for assistance.