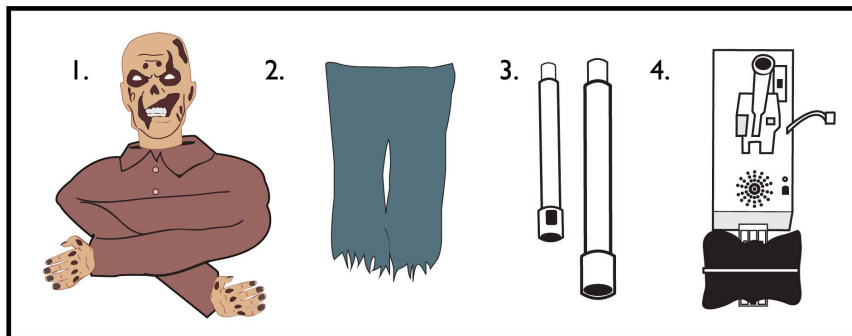


RIISING FROM THE GRAVE ZOMBIE™

INSTALLATION AND OPERATING INSTRUCTIONS

KEEP ALL PLASTIC AND WIRE PARTS AWAY FROM CHILDREN

SMART PHONE SCAN
SETUP VIDEO



PARTS

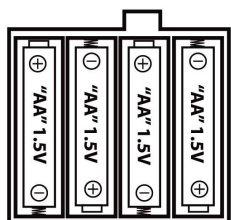
1. HEAD AND BODY

2. PANTS

3. POLES (2)

4. MODULE

1. Lift shirt and insert POLE underneath HEAD AND BODY. Press POLE until it clicks into place. (Connect A to A)
2. Connect POLES together. Press until they click into place. (Connect B to B)
3. Insert bottom of POLE into MODULE. Press until the POLE clicks into place. (Match C to C)
4. Connect 6V2A ADAPTER (not included) or insert 4 AA alkaline batteries into the battery compartment located on the MODULE.
5. Turn switch on top of MODULE to ON to operate in Sound activation mode. Make a loud sound (clap) to activate. Leave switch in OFF position when not in use.
6. Place weighted foot inside the opening of PANTS fully so that foot touches inseam of pants.
7. Attach hook and loop fasteners located beneath the foam liner on the inside of the shirt to hook and loop fasteners located on the top of the pants.



BATTERY INSTRUCTIONS AND CAUTIONS:

- Use only the batteries recommended.
- Remove batteries when not in use.
- Do NOT use rechargeable batteries.
- Be sure to insert the batteries with the correct polarity +/-.
- Never mix different types of batteries: old and new, carbon-zinc, alkaline, nickel-cadmium.
- Always dispose of exhausted batteries properly.

ADULT SUPERVISION IS RECOMMENDED WHEN CHANGING BATTERIES.

Optional Footpad Setup

Follow steps #1 through 5 on initial installation first.

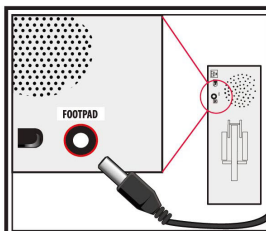
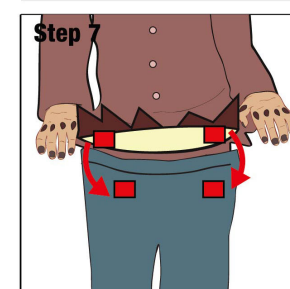
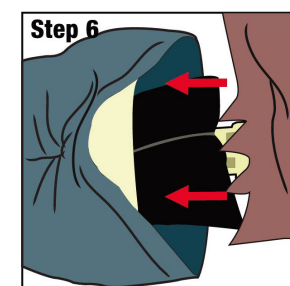
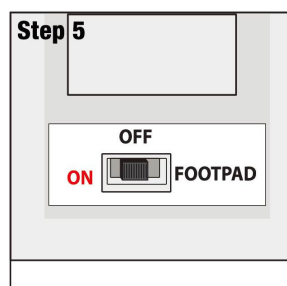
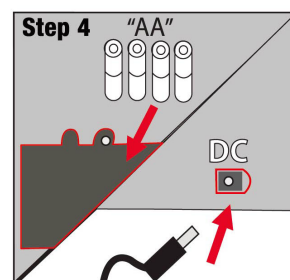
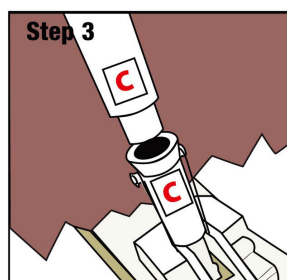
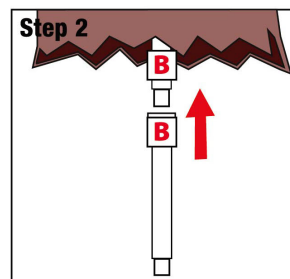
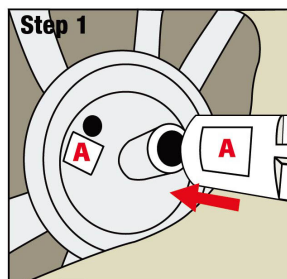
1. Connect the cable from the optional footpad to the jack labeled FOOTPAD located on the MODULE.
2. Place the switch on the MODULE into the 'FOOTPAD' position to enable FOOTPAD activation.
3. Step on FOOTPAD to activate the scary sequence.
(go to instruction #6 to continue setup)

*Footpads are sold separately and can be purchased at www.tekkyaccessories.com

Outdoor Warnings:

For best overall performance, we recommend you operate your item in a sheltered outdoor area. We also recommend you bring your item indoors during adverse weather conditions (extreme cold, strong winds and/or rain). This item operates best outdoors in temperatures above freezing (32°F).

If you hear a constant "clicking" sound and this item does not function properly, it means there is an obstruction preventing the pole from lowering fully (for example: rock, bush, incline, etc.). The clicking sound does not mean the item is broken, just remove any obstructions and the item should function normally.



Surface Washable Only.

ALL NEW MATERIALS : POLYESTER FIBERS,
POLYURETHANE FOAM, POLYSTYRENE FOAM, SAND

Requires 4 'AA' Batteries (Not included)
or 6V 2A DC adapter (sold separately)

RIISING FROM THE GRAVE is a trademark of Tekky. Copyright © 2017 Tekky. All Rights Reserved.

FOR FOOTPADS, ADAPTERS, AND ALL OTHER ACCESSORIES, PLEASE VISIT: www.tekkyaccessories.com



TEKKY
visit us at:
tekkydesign.com



DO NOT RETURN THIS ITEM TO THE STORE!
If experiencing technical difficulties, please go to www.tekkydesign.com for assistance.

Warning! This item is not a toy. For decoration only. Small parts, choking hazard.
This product is intended for use by persons 15 years of age and older.
Not intended for use by children ages 14 years and younger.

WARNING
DO NOT TURN ITEM ON UNTIL YOU HAVE COMPLETELY FINISHED ASSEMBLY.
STAY CLEAR OF ITEM WHILE OPERATING.
DO NOT PLACE ITEM ON UNEVEN GROUND.
DO NOT PLACE WEIGHT ON ITEM WHILE IN OPERATION