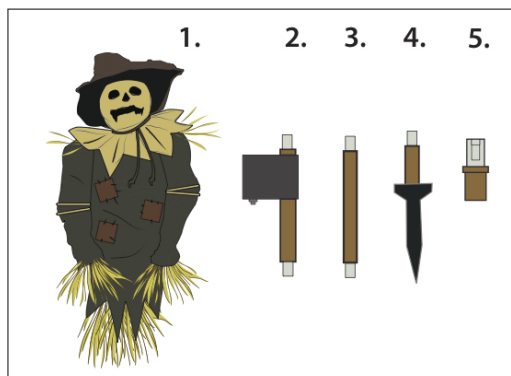


# SCARECROW THRASHER™

## INSTALLATION AND OPERATING INSTRUCTIONS

KEEP ALL PLASTIC AND WIRE PARTS AWAY FROM CHILDREN

**WARNING: DO NOT TURN ON THE PROP UNTIL FULLY ASSEMBLED: STAY CLEAR OF THE PROP WHILE OPERATING**



## PARTS

**1. HEAD AND CLOTHES**

**2. MODULE**

**3. CENTER POLE**

**4. STAKE POLE**

**5. POLE INSERT\***

1. Snap lock **MODULE** pole into the base located inside **HEAD AND CLOTHES**. (Match A to A)
2. Snap lock **CENTER POLE** into the bottom of the **MODULE**. (Match B to B)
3. Snap lock **STAKED POLE** into the bottom of the **CENTER POLE**. (Match C to C)
4. Connect the wire running from **MODULE** to the wire located inside the **HEAD AND CLOTHES**. (Match D to D)
5. Connect the wire running underneath the **HEAD AND CLOTHES** to the **MODULE**. (Match E to E)
6. Reach inside the fabric on the **HEAD AND BODY**. Connect 6V2A ADAPTER (not included) or insert 4 AA alkaline batteries into the battery compartment located on the **MODULE**. Position the **HEAD AND CLOTHES** as pictured below. Turn the switch to the ON position to activate the item. Make a loud sound (clap), or move in front of the item to activate. Turn item OFF when not in use.

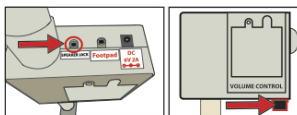
### \*OPTIONAL POLE INSERT

If experiencing any stability issues with your Scarecrow Thrasher™ go to [www.tekkyaccessories.com](http://www.tekkyaccessories.com) for instructions on how to use the POLE INSERT.

### OPTIONAL EXTERNAL SPEAKER SET UP

EXTERNAL SPEAKER IS NOT INCLUDED. MUST BE PURCHASED SEPARATELY.

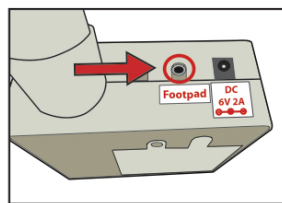
1. Plug speaker cord into the jack labeled SPEAKER JACK located on top of the base.
2. Use volume knob on external speaker to control volume levels.



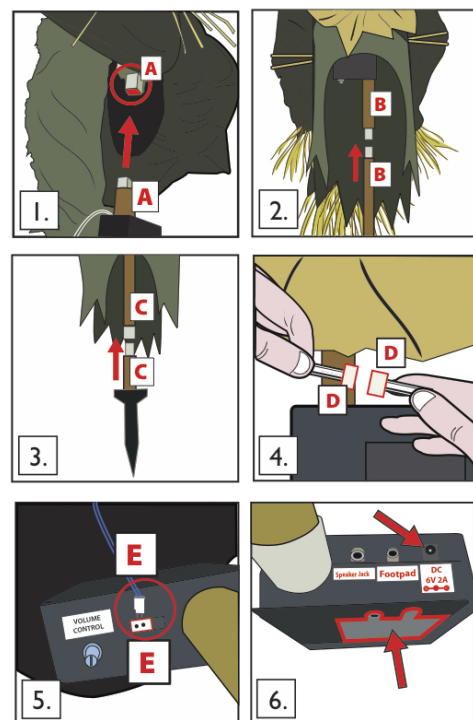
### OPTIONAL FOOTPAD SET UP

FOOTPAD IS NOT INCLUDED. MUST BE PURCHASED SEPARATELY.

1. Insert the cable from optional footpad into the jack labeled FOOTPAD on the module.
2. Place the switch in the FOOTPAD position to enable FOOTPAD activation
3. Step on the FOOTPAD to activate the scary sequence!



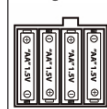
\* Footpads, adapters and all other accessories are sold separately and can be purchased at [www.tekkyaccessories.com](http://www.tekkyaccessories.com)



### SMART PHONE SCAN SETUP VIDEO



#### Battery Diagram



#### BATTERY INSTRUCTIONS AND CAUTIONS

Battery installation and removal should be performed by an adult. Remove batteries when not in use. Use only batteries recommended in the instructions. Do not mix new and used batteries. Do not mix alkaline, carbon-zinc, nickel-cadmium, rechargeable or different types of batteries. Be mindful to insert batteries with the correct polarity (+/-) as indicated. Remove all exhausted batteries. Rechargeable batteries are only to be charged under adult supervision. Rechargeable batteries are to be removed from the item before being charged. Non-rechargeable batteries are not to be recharged. The supply terminals are not to be short-circuited. Always dispose of exhausted batteries properly. Do NOT dispose of batteries in fire, they may leak or explode.

**Warning!** This item is not a toy. For decoration only. Small parts, choking hazard. This product is intended for use by persons 15 years of age and older. Not intended for use by children ages 14 years and younger.

#### WARNING

**DO NOT TURN ITEM ON UNTIL YOU HAVE COMPLETELY FINISHED ASSEMBLY. STAY CLEAR OF ITEM WHILE OPERATING. DO NOT PLACE ITEM ON UNEVEN GROUND. DO NOT PLACE WEIGHT ON ITEM WHILE IN OPERATION \*\* FOR INDOOR USE ONLY\*\***



visit us at [tekkydesign.com](http://tekkydesign.com)  
Requires 6V 2A ADAPTER  
or 4 AA batteries (not included)

ALL NEW MATERIALS:  
METAL, FOAM, PLASTIC, POLYESTER  
Surface washable only.

SCARECROW THRASHER™ is a trademark of Tekky  
Copyright © 2018 Tekky  
All Rights Reserved.  
MADE IN CHINA



**DO NOT RETURN THIS ITEM TO THE STORE!**  
If experiencing technical difficulties, please go to [www.tekkydesign.com](http://www.tekkydesign.com) for assistance.