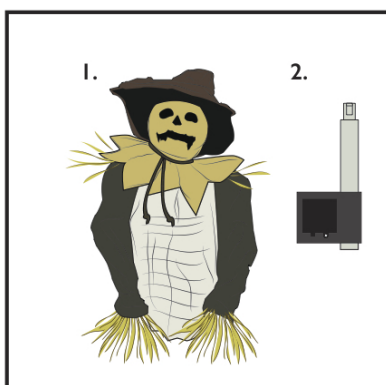


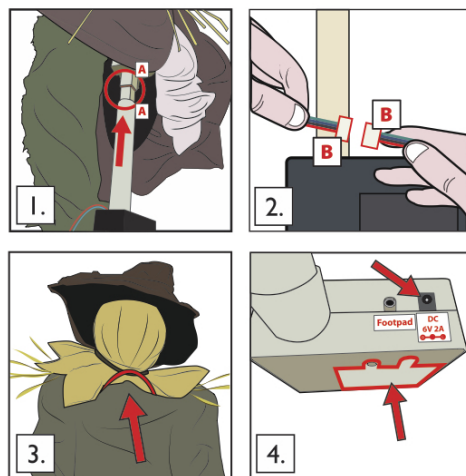
THE SCARE CROW

INSTALLATION AND OPERATING INSTRUCTIONS

KEEP ALL PLASTIC AND WIRE PARTS AWAY FROM CHILDREN



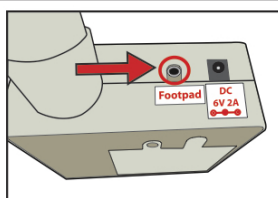
1. Snap lock MODULE pole into the base located inside HEAD AND CLOTHES. (Match A to A)
2. Connect the wire running from MODULE to the wire located inside the HEAD AND CLOTHES. (Match B to B)
3. Locate the metal loop on the back of the Scare-Crow and mount the item to a wall, front door, or in any desired location. Bend the arms and hat brim as pictured below.
4. Reach inside the fabric on the HEAD AND BODY. Connect 6V2A ADAPTER (not included) or insert 4 AA alkaline batteries into the battery compartment located on the MODULE. Turn the switch to the ON position to activate the item. Move in front of the item to activate. Turn item OFF when not in use.
5. **NOTE:** A PIR sensor detects the human infrared signature and must be uncovered and facing forward to trigger this item. In order for the SCARE-CROW to function optimally, make sure the PIR sensor located on the front of the item is facing forward, and not blocked by any fabric.



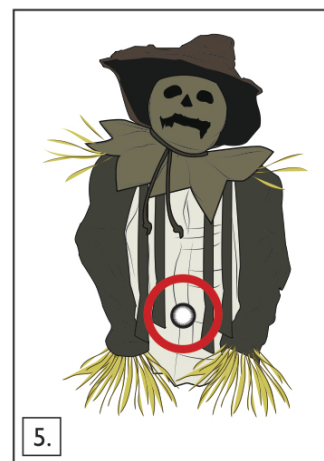
OPTIONAL FOOTPAD SET UP

FOOTPAD IS NOT INCLUDED. MUST BE PURCHASED SEPARATELY.

1. Insert the cable from optional footpad to the jack labeled FOOTPAD located on the MODULE.
2. Place the switch in the FOOTPAD position to enable FOOTPAD activation
3. Step on the FOOTPAD to activate the scary sequence!



* Footpads, adapters and all other accessories are sold separately and can be purchased at www.tekkyaccessories.com

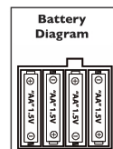


SMART PHONE SCAN SETUP VIDEO



BATTERY INSTRUCTIONS AND CAUTIONS

Battery installation and removal should be performed by an adult. Remove batteries when not in use. Use only batteries recommended in the instructions. Do not mix new and used batteries. Do not mix alkaline, carbon-zinc, nickel-cadmium, rechargeable or different types of batteries. Be mindful to insert batteries with the correct polarity (+/-) as indicated. Remove all exhausted batteries. Rechargeable batteries are only to be charged under adult supervision. Rechargeable batteries are to be removed from the item before being charged. Non-rechargeable batteries are not to be recharged. The supply terminals are not to be short-circuited. Always dispose of exhausted batteries properly. Do NOT dispose of batteries in fire, they may leak or explode.



Warning! This item is not a toy. For decoration only. Small parts, choking hazard. This product is intended for use by persons 15 years of age and older. Not intended for use by children ages 14 years and younger.

WARNING
DO NOT TURN ITEM ON UNTIL YOU HAVE COMPLETELY FINISHED ASSEMBLY.
STAY CLEAR OF ITEM WHILE OPERATING.
DO NOT PLACE WEIGHT ON ITEM WHILE IN OPERATION
**** FOR INDOOR USE ONLY****



visit us at tekkydesign.com
Requires 6V 2A ADAPTER
or 4 AA batteries (not included)

ALL NEW MATERIALS:
METAL, FOAM, PLASTIC, POLYESTER
Surface washable only.

THE SCARE CROW™
is a trademark of Tekky Toys.
Copyright © 2018 Tekky Toys.
All Rights Reserved.
MADE IN CHINA



DO NOT RETURN THIS ITEM TO THE STORE!
If experiencing technical difficulties, please go to www.tekkydesign.com for assistance.