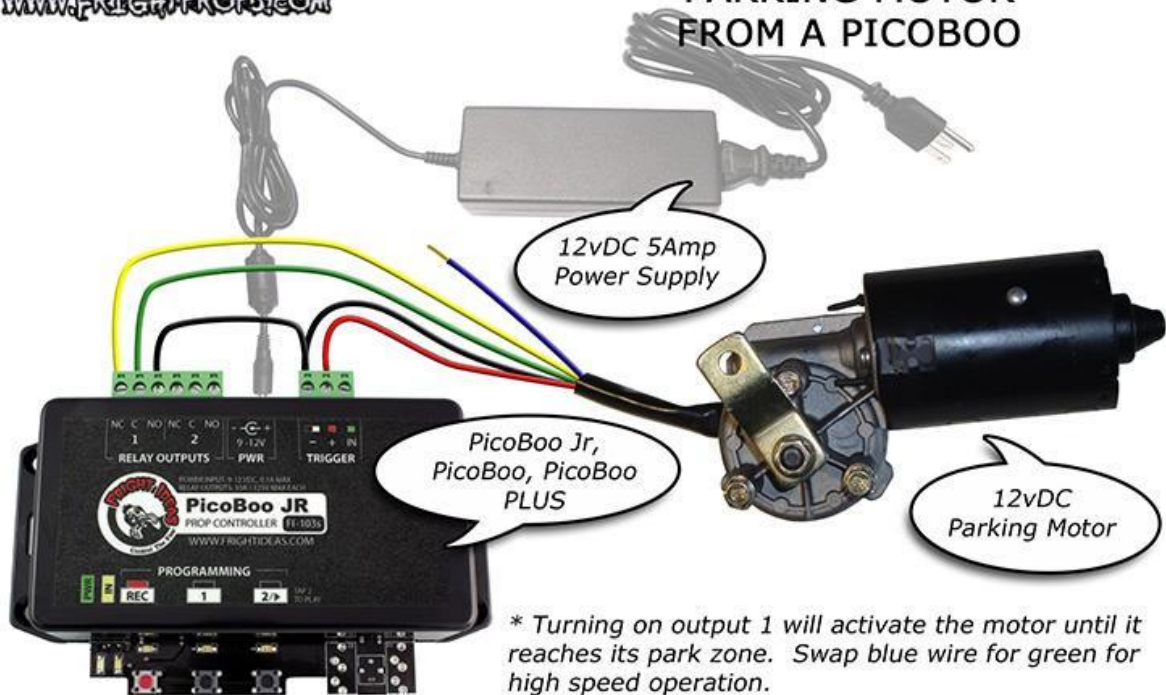


This information only applies to the FrightProps PARKING motor.

USING THE PICOBOO TO RUN THE MOTOR IN ONE DIRECTION TO THE PARK POSITION

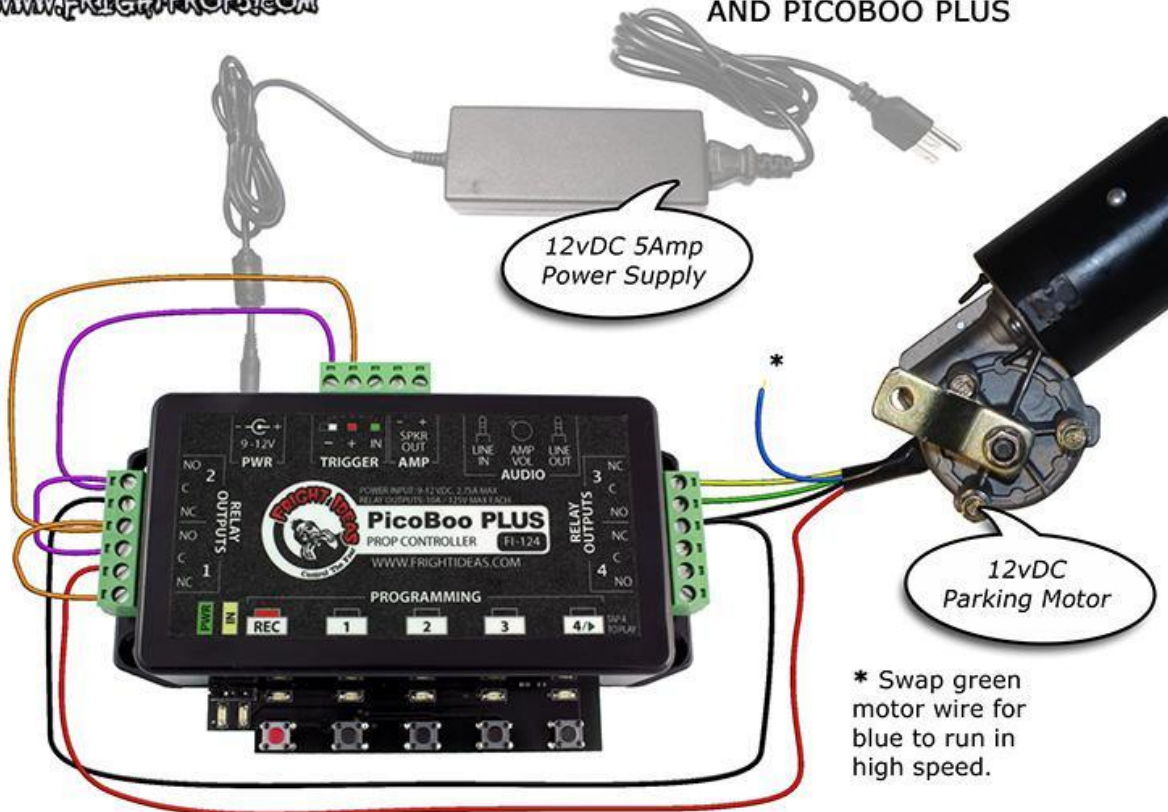


CONTROL 12vDC PARKING MOTOR FROM A PICOBOO



USING THE PICOBOO PLUS TO RUN THE MOTOR IN TWO DIRECTIONS AND PARKING

**FORWARD/REVERSE/PARK
WITH A 12vDC PARKING MOTOR
AND PICOBOO PLUS**



START: Tap the record button to start programming.

Clockwise rotation

- Hold button 1 in and momentarily tap button 3. Motor will rotate until it reaches the park location and stop. Let go of button 1.
- To allow the motor to continue to rotate hold button 1 & 3 in at the same time. When ready to park let go of 3, wait until it parks and then let go of 1.

Counter-Clockwise rotation

- Hold button 2 in and momentarily tap button 3. Motor will rotate until it reaches the park location and stop. Let go of button 2.
- To allow the motor to continue to rotate hold button 2 & 3 in at the same time. When ready to park let go of 3, wait until it parks and then let go of 2.

END: Tap the record button to save the programming.



