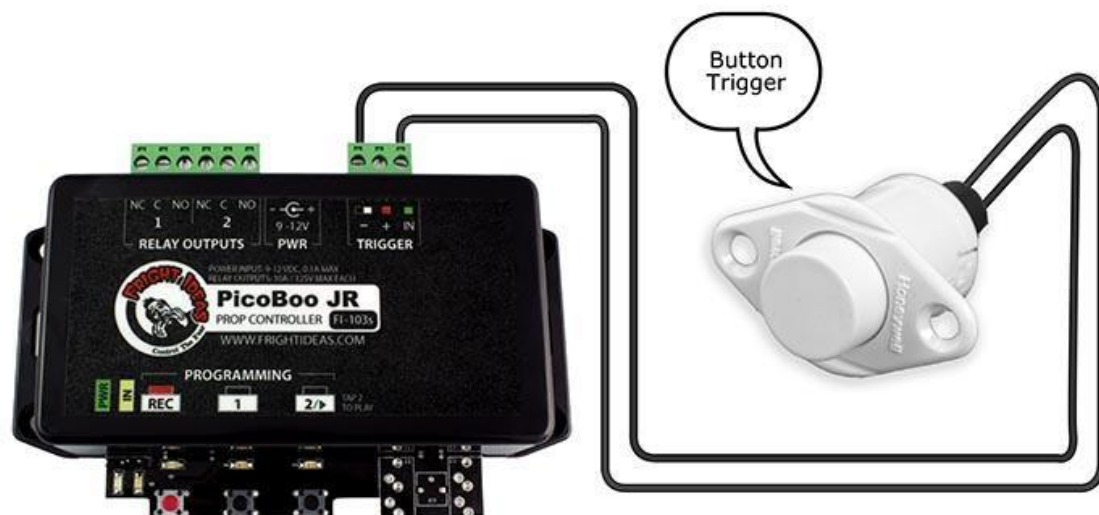


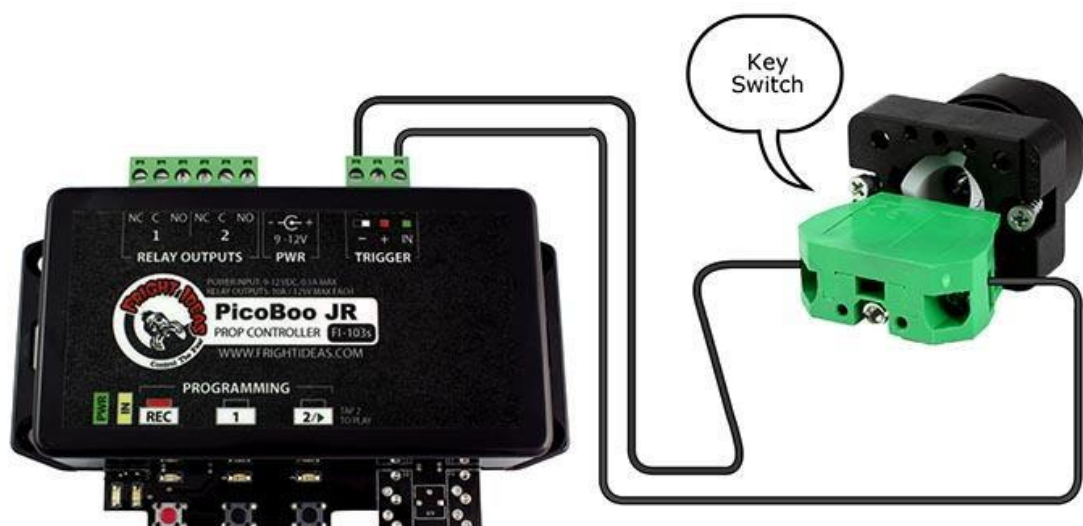
This document provides wiring diagrams for some of the unique triggers we offer. Please refer to the product manual for common trigger (such as step mat, motion sensor, etc) wiring. Links to the triggers mentioned in this document can be found at the bottom.



ACTIVATING A PICOBOO FROM A BUTTON TRIGGER

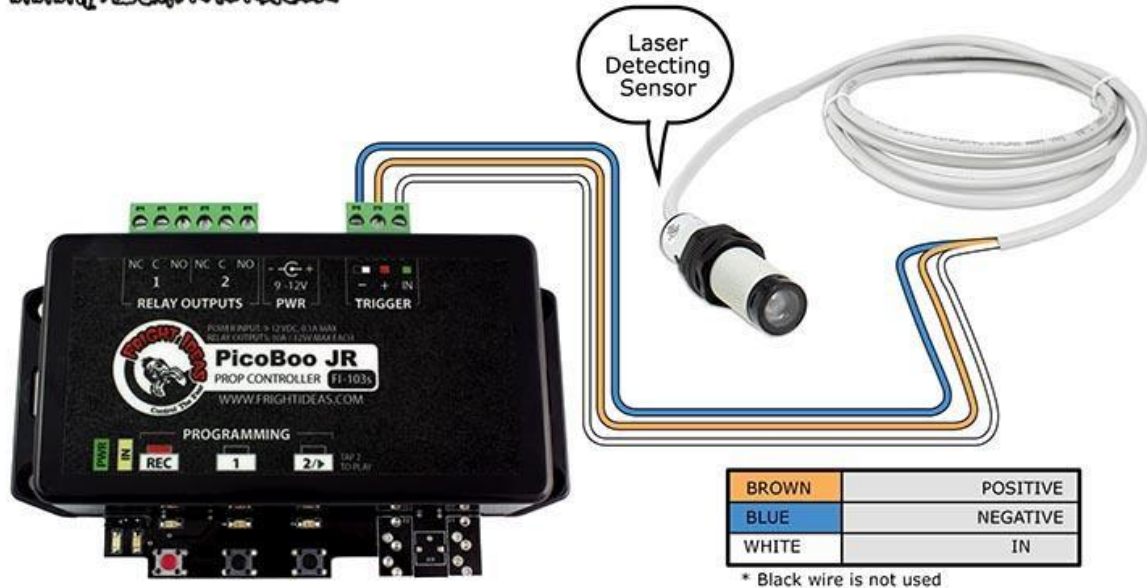


ACTIVATING A PICOBOO FROM A KEY SWITCH

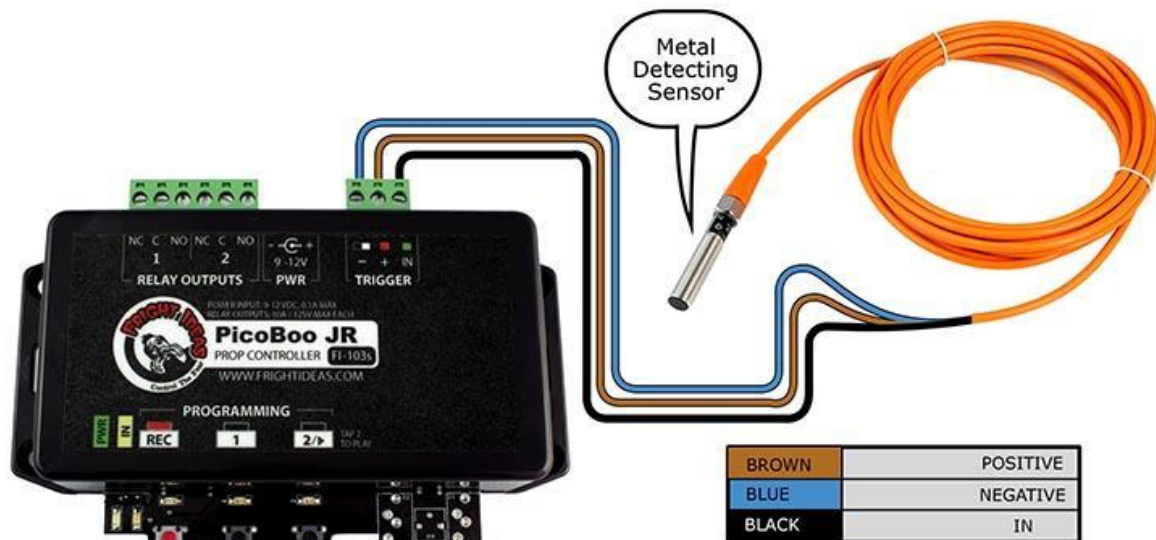


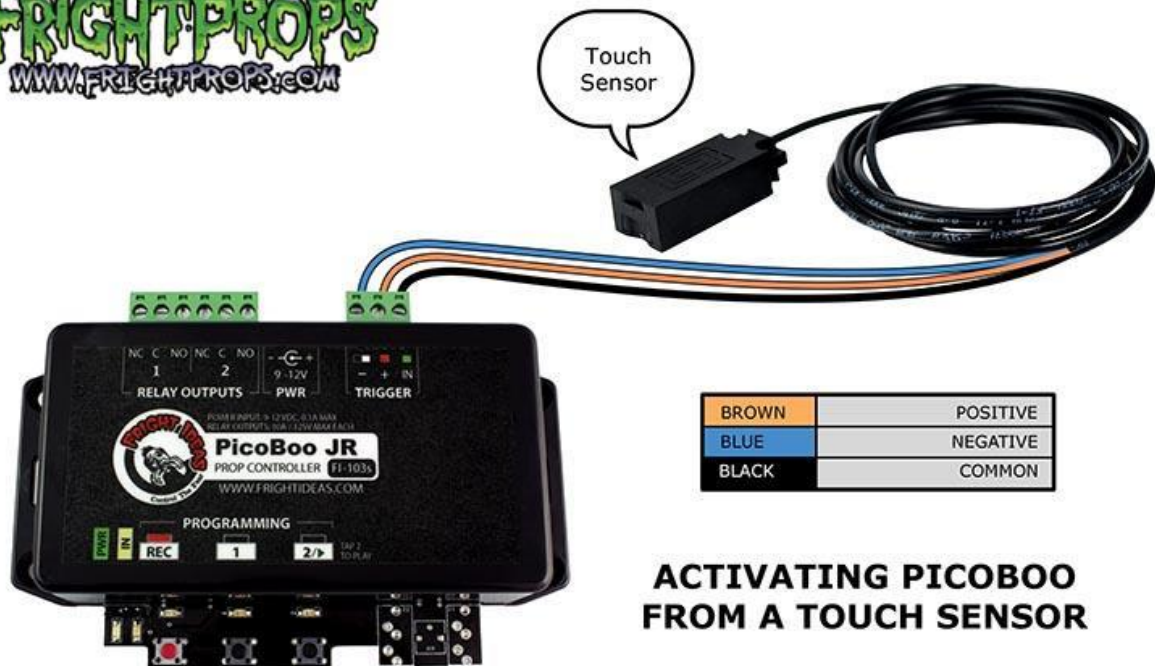


ACTIVATING PICOBOO FROM A LASER DETECTING SENSOR

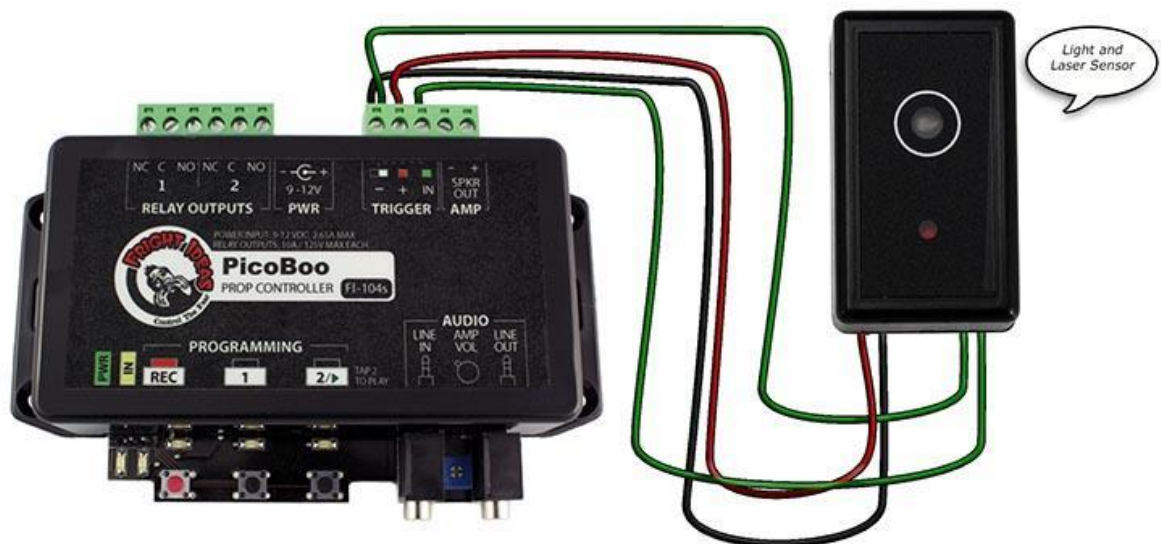


ACTIVATING PICOBOO FROM A METAL DETECTING SENSOR



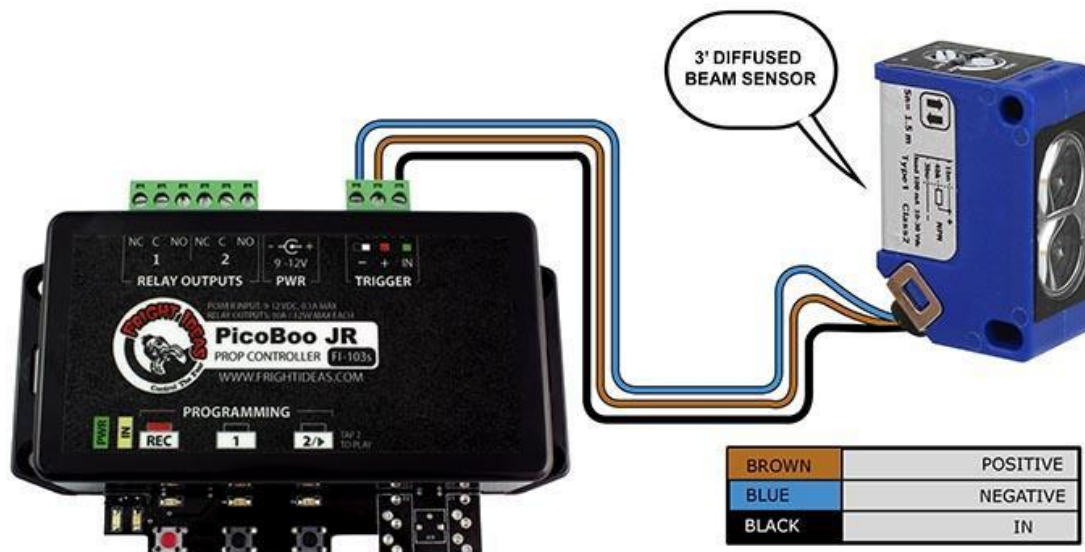


ACTIVATING A PICOBOO WITH A NORMALLY CLOSED LIGHT & LASER SENSOR

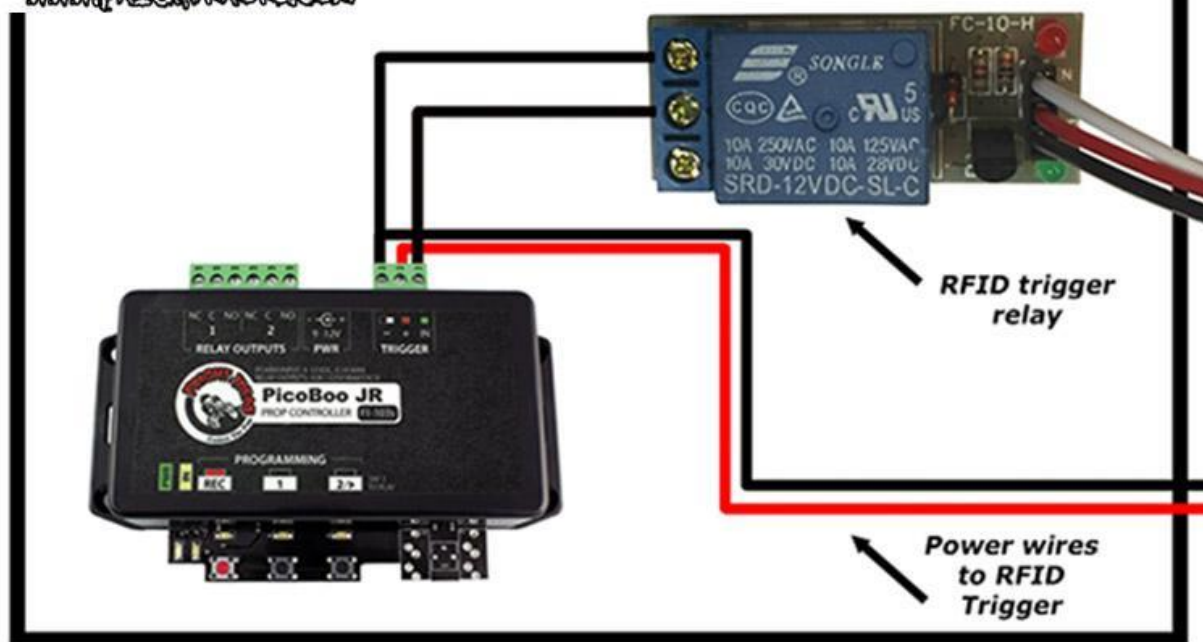


Note: You must switch the trigger input of the PicoBoo to accept Normally Closed trigger input to use this sensor.

ACTIVATING PICOBOO FROM A 3' DIFFUSED BEAM SENSOR



Activating PicoBoo from an RFID Trigger





**ACTIVATING A PICOBOO
WITH 2 BUTTONS THAT
MUST BE PRESSED AT THE
SAME TIME**

