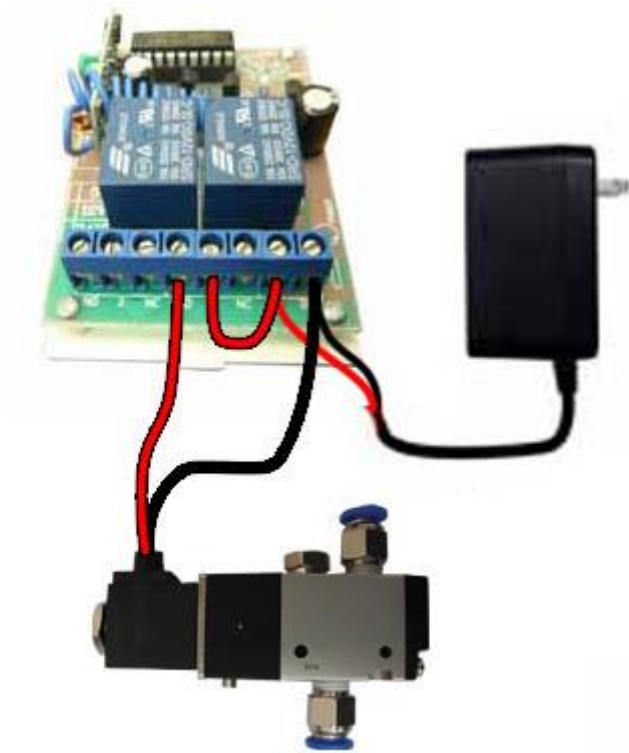
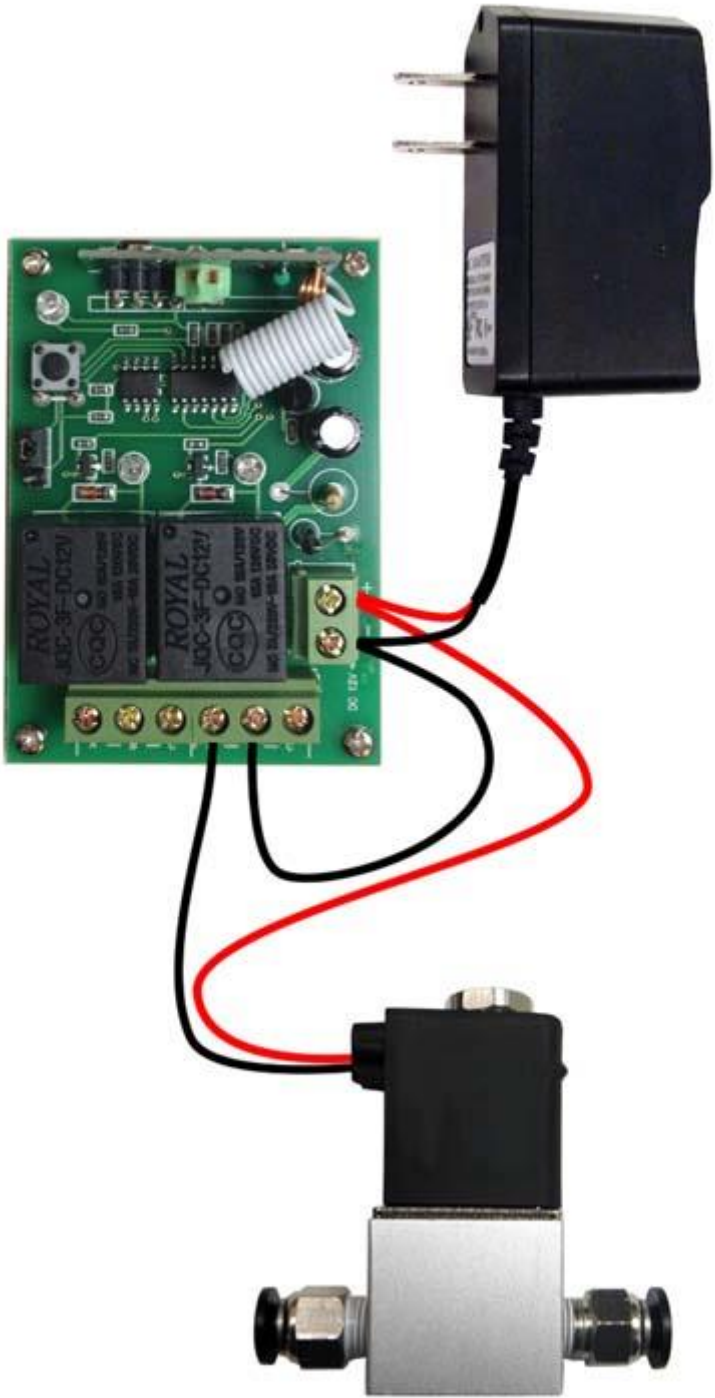


2-RELAY WIRELESS TRIGGERS

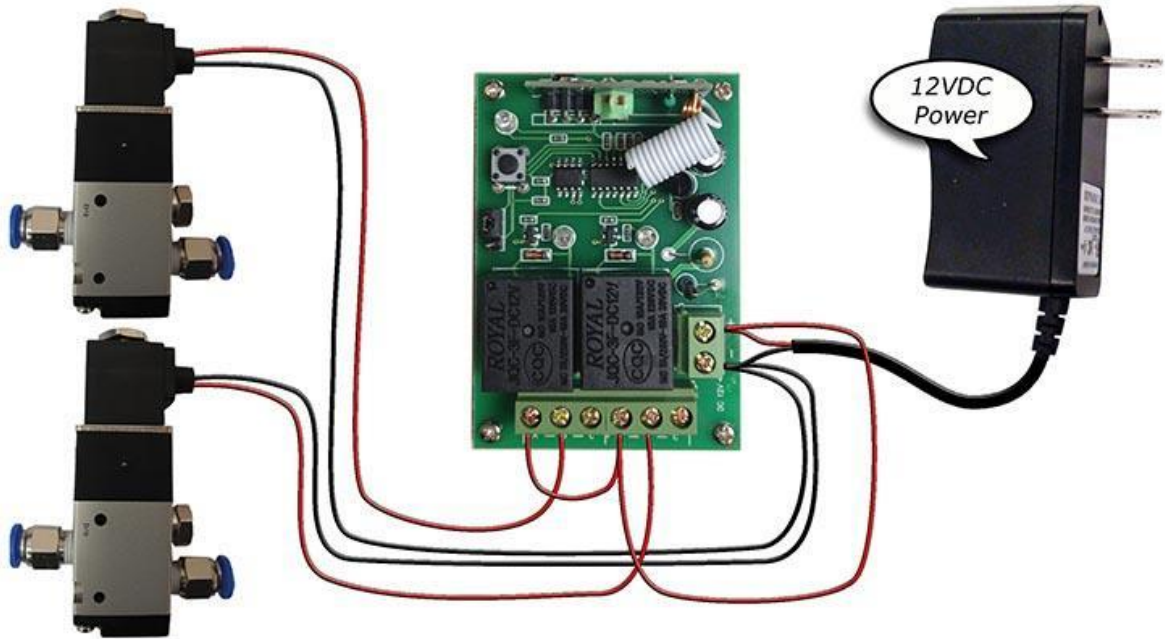
We have two different revisions of the 2-relay wireless trigger. Each requires different wiring. They can be identified by blue or black relays inside the base station.







2-RELAY WIRELESS WITH TWO 12VDC SOLENOIDS



12-RELAY WIRELESS TRIGGERS

ACTIVATING A 12VDC DEVICE FROM THE 12-RELAY WIRELESS TRIGGER

